

WAAS CH 63028 W27A	APP CRS 271°	Rwy Idg TDZE 430 Apt Elev 430
--	------------------------	---

RNAV (GPS) RWY 27

LAWRENCEVILLE-VINCENNES INTL (L WV)

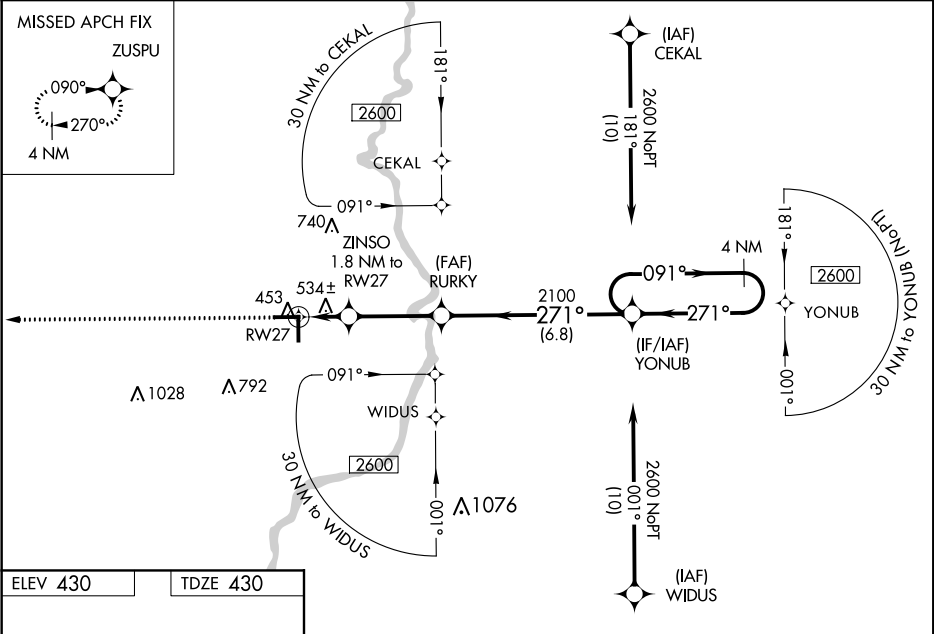
⚠ For uncompensated Baro-VNAV systems, LNAV/VNAV NA below -15°C (5°F) or above 41°C (105°F). DME/DME RNP-0.3 NA. Baro-VNAV and VDP NA when using Mount Carmel altimeter setting. When local altimeter setting not received use Mount Carmel altimeter setting and increase all DA 26 feet and all MDA 40 feet: increase LNAV/VNAV all Cats visibility 1⁄8 mile. Inop table does not apply to LNAV Cat C. For inop ODALS increase LNAV/VNAV all Cats visibility to 13⁄8 miles. For inop ODALS when using Mount Carmel altimeter setting increase LPV all Cats visibility to 7⁄8 mile, LNAV/VNAV all Cats visibility to 1½ miles and LNAV Cats C and D visibility to 1½ miles. Circling to Rwy 36 NA at night.

ODALS

MISSED APPROACH:

Climb to 2600 direct ZUSPU and hold.

ASOS 118.0	EVANSVILLE APP CON ★ 125.6 343.7	UNICOM 122.8 (CTAF)
----------------------	--	-------------------------------



ELEV 430

TDZE 430

2600 ZUSPU

VGSI and RNAV glidepath not coincident (VGSI Angle 3.00/TCH 26).

4 NM Holding Pattern

YONUB

RURY

ZINSO 1.8 NM to RW27

*1.1 NM to RW27

*1040

2100

271°

091°

2600

GP 3.00° TCH 45

CATEGORY	A	B	C	D
LPV DA		680-3⁄4	250 (300-3⁄4)	
LNAV/VNAV DA		832-1⁄4	402 (500-1⁄4)	
LNAV MDA	800-3⁄4	370 (400-3⁄4)	800-1	370 (400-1)
CIRCLING	880-1	450 (500-1)	900-1½ 470 (500-1½)	980-2 550 (600-2)