

WAAS CH 93728 W09A	APP CRS 090°	Rwy ldg 5198 TDZE 428 Apt Elev 430
--	------------------------	---

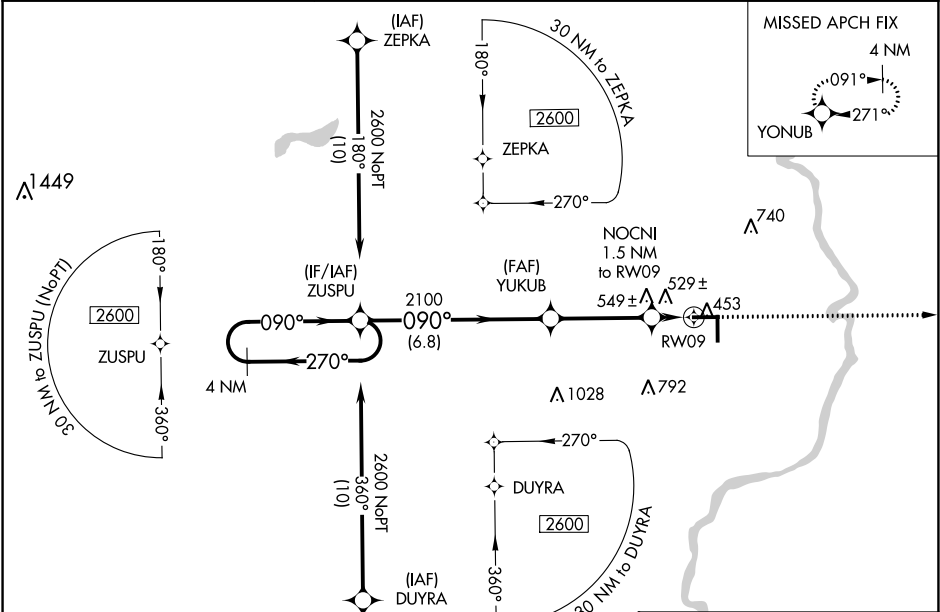
RNAV (GPS) RWY 9
LAWRENCEVILLE-VINCENNES INTL (LWV)

⚠ Baro-VNAV NA when using Mount Carmel altimeter setting. For uncompensated Baro-VNAV systems, LNAV/VNAV NA below -15°C (5°F) or above 41°C (105°F). DME/DME RNP-0.3 NA.

⚠ When local altimeter setting not received use Mount Carmel altimeter setting and increase all DA 26 feet and all MDA 40 feet: increase LPV all Cats, LNAV/VNAV all Cats, and LNAV Cat C/D visibilities ½ mile. Circling to Rwy 36 NA at night.

MISSED APPROACH:
Climb to 2600 direct YONUB and hold.

ASOS 118.0	EVANSVILLE APP CON ★ 125.6 343.7	UNICOM 122.8 (CTAF) 0
----------------------	--	---------------------------------



ELEV 430 **TDZE 428**

4 NM Holding Pattern

2600 **270°** **090°**

GP 3.00° TCH 45

ZUSPU **YUKUB** **NOCNI 1.5 NM to RW09** **RW09**

***LNAV only**

***940**

6.8 NM **3.6 NM** **1.5 NM**

2600 **YONUB**

090° to RW09

5198 X 100 **81** **27** **36**

5199 X 100

Ultralight Area

REIL Rwy 9, 27, 18 and 36 0
MIRL Rwy 9-27 and 18-36 0

CATEGORY	A	B	C	D
LPV DA		678-¾	250 (300-¾)	
LNAV/VNAV DA		829-1¾	401 (400-1¾)	
LNAV MDA	820-1	392 (400-1)	820-1½	392 (400-1½)
CIRCLING	880-1	450 (500-1)	900-1½ 470 (500-1½)	980-2 550 (600-2)

EC-3, 31 DEC 2020 to 28 JAN 2021

EC-3, 31 DEC 2020 to 28 JAN 2021