

LOC/DME I-LNR

108.35

Chan 20(Y)

APP CRS

270°

Rwy Idg

5000

TDZE

717

Apt Elev

717

LOC RWY 27

TRI-COUNTY RGNL (LNR)

DME required. RADAR required for procedure entry.

NA

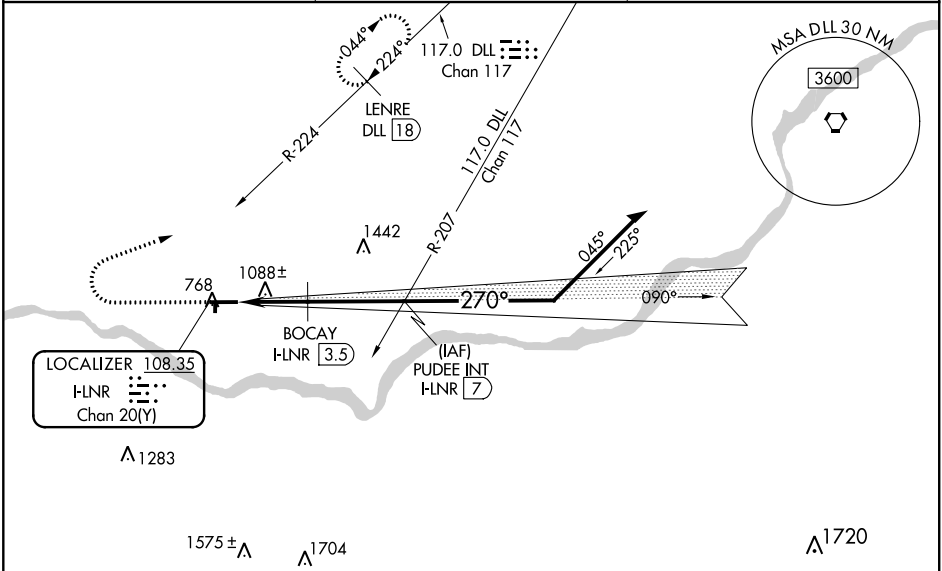
-30°C

Circling Rwy 18, 36 NA at night. Rwy 27 helicopter visibility reduction below ¾ SM NA. If local altimeter setting not received, use Dane County Rgnl-Truax Field altimeter setting and increase all MDA 120 feet. Increase S-27 visibility Cat A/B ¼ SM, Cat C ½ SM, Circling visibility Cat B ¼ SM, Cat C ½ SM. Increase BOCAV fix minimums S-27 visibility Cat C ¼ SM, Circling Cat A/B ¼ SM, Cat C ½ SM.

MISSED APPROACH:

Climb to 2200 then climbing right turn to 3300 on heading 070° and on DLL R-224 to LENRE/DLL VORTAC 18 DME and hold.

ASOS 119.425	MADISON APP CON ★ 135.45 343.7	UNICOM 123.0 (CTAF) 0
-----------------	-----------------------------------	--------------------------



ELEV 717

TDZE 717

2200

3300

hdg 070°

DLL R-224

LENRE DLL 18

VGSI and descent angles not coincident (VGSI Angle 4.00/TCH 34).

PUDEE INT I-LNR 7

Remain within 10 NM

270° 6 NM from FAF

5000 X 75

1850 X 60

36

270°

6000

090°

2700

2700

3.05°

TCH 33

1580\*

1.4 NM

1.1 NM

3.5 NM

\*1680 when using Dane County Rgnl-Truax Field altimeter setting.

CATEGORY	A	B	C	D
S-LOC 27	1580-1 863 (900-1)	1580-1¼ 863 (900-1¼)	1580-2½ 863 (900-2½)	NA
CIRCLING	1580-1¼ 863 (900-1¼)		1580-2½ 863 (900-2½)	NA
BOCAV FIX MINIMUMS				
S-LOC 27	1360-1 643 (700-1)		1360-1¾ 643 (700-1¾)	NA
CIRCLING	1520-1 803 (900-1)		1560-2½ 843 (900-2½)	NA

REIL Rwy 27 0

MIRL Rwys 9-27 and 18-36 0

FAF to MAP 6 NM

Knots	60	90	120	150	180
Min:Sec	6:00	4:00	3:00	2:24	2:00