

WAAS CH 78206 W09A	APP CRS 090°	Rwy Idg TDZE Apt Elev	5000 717 717
--	------------------------	-----------------------------	---

RNAV (GPS) RWY 9

TRI-COUNTY RGNL (LNR)

RNP APCH

▼

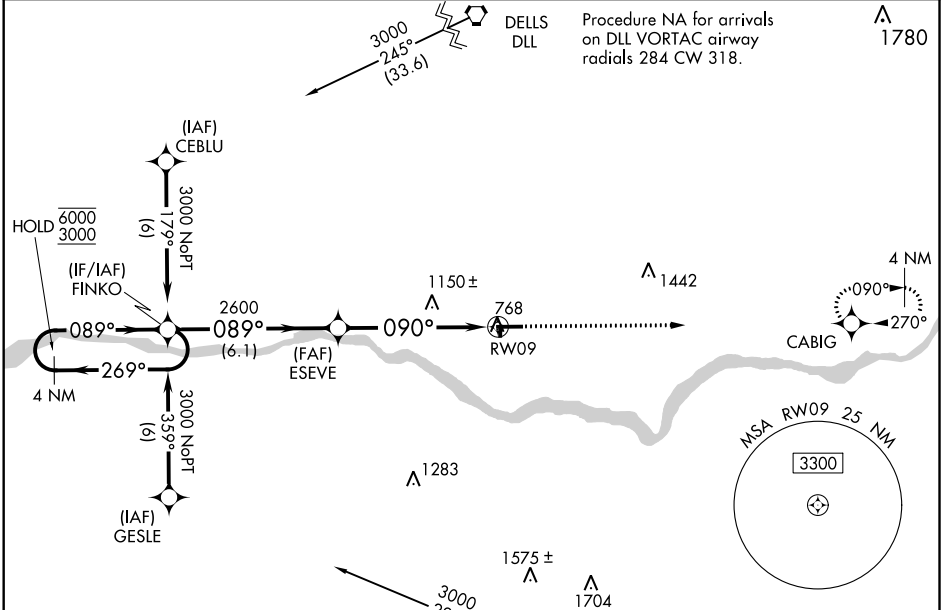
⚠

❄-30°C

Circling Rwy 18, 36 NA at night. Baro-VNAV and VDP NA when using Dane County Rgnl-Truax Field altimeter setting. Rwy 9 helicopter visibility reduction below ¾ SM NA. For uncompensated Baro-VNAV systems, LNAV/VNAV NA below -22°C or above 54°C. When local altimeter setting not received, use Dane County Rgnl-Truax Field altimeter setting and increase LPV DA to 1104, LNAV/VNAV DA to 1769, and all MDA 120 feet. Increase LPV visibility all Cats ½ SM, LNAV visibility Cat C and Circling visibility Cat A ¼ SM, Circling visibility Cat C ½ SM.

MISSED APPROACH:
Climb to 3000 direct CABIG and hold.

ASOS 119.425	MADISON APP CON ★ 135.45 343.7	UNICOM 123.0 (CTAF) 0
------------------------	--	--



ELEV 717	TDZE 717
----------	----------

4 NM Holding Pattern FINKO

6000 3000 269° 089° GP 3.00° TCH 35

089° 2600 090° 2600 6.1 NM 3.5 NM 2.2 NM

ESEVE 2600 *2.2 NM to RW09 RW09

*LNAV only.

3000 CABIG

090° to RW09

5000 X 75 81 1850 X 60 36 27

CATEGORY	A	B	C	D
LPV DA	994-1	277 (300-1)		NA
LNAV/VNAV DA	1659-4	942 (1000-4)		NA
LNAV MDA	1460-1 743 (800-1)	1460-1¼ 743 (800-1¼)	1460-2¼ 743 (800-2¼)	NA
CIRCLING	1520-1 803 (900-1)	1520-1¼ 803 (900-1¼)	1560-2½ 843 (900-2½)	NA

REIL Rwy 27 **0**
MRL Rwy 9-27 and 18-36 **0**