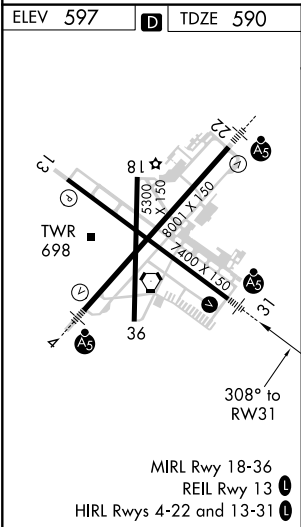
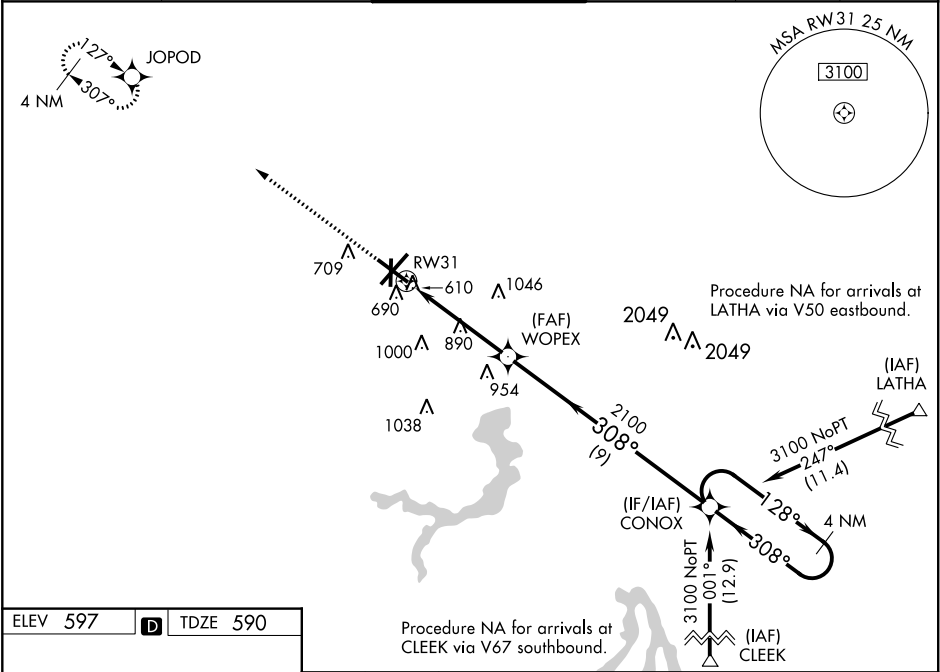


WAAS CH 90124 W31A	APP CRS 308°	Rwy Idg TDZE Apt Elev	7000 590 597
--	------------------------	-----------------------------	---

RNAV (GPS) RWY 31
ABRAHAM LINCOLN CAPITAL (SPI)

<p>⚠ DME/DME RNP-0.3 NA. Baro-VNAV NA below -16°C (4°F). When local altimeter setting not received, use Lincoln altimeter setting: increase all DA 57 feet and MDA 60 feet, increase Circling Cat C and D visibility ¼ SM. VDP and ASR Baro-VNAV NA when using Logan County altimeter setting. For inoperative MALSR, increase LPV visibility to ¾ all Cats, increase LNAV/VNAV Cat D visibility to 1.</p>	<p>MALSR</p> <p>A5</p>	<p>MISSED APPROACH: Climb to 2500 direct JOPOD and hold.</p>
---	-------------------------------	--

ATIS 127.65 270.1	SPRINGFIELD APP CON ★ 126.15 323.0	SPRINGFIELD TOWER ★ 121.3 (CTAF) 257.8	GND CON 121.9 348.6	CLNC DEL 121.7	UNICOM 122.95
-----------------------------	--	--	-------------------------------	--------------------------	-------------------------



2500	JOPOD	4 NM Holding Pattern	CONOX	WOPEX	RW31
*LNAV only.	*1.8 NM to RW31	128°	308°	2100	1.8 NM
GP 3.00°	TCH 55	9 NM	2.8 NM	1.8 NM	
CATEGORY	A	B	C	D	
LPV DA	840-½	250 (300-½)			
LNAV/VNAV DA	865-½	275 (300-½)			865-¾ 275 (300-¾)
LNAV MDA	1200-½	610 (700-½)	1200-1¼ 610 (700-1¼)	1200-1½ 610 (700-1½)	
CIRCLING	1200-1	603 (700-1)	1360-2¼ 762 (800-2¼)	1380-2½ 782 (800-2½)	

EC-3, 31 DEC 2020 to 28 JAN 2021

EC-3, 31 DEC 2020 to 28 JAN 2021