

WAAS
CH **97619**
W22A

APP CRS
224°

Rwy Idg
TDZE
Apt Elev

6501
750
755

RNAV (GPS) RWY 22

UNIVERSITY OF ILLINOIS-WILLARD (CMI)

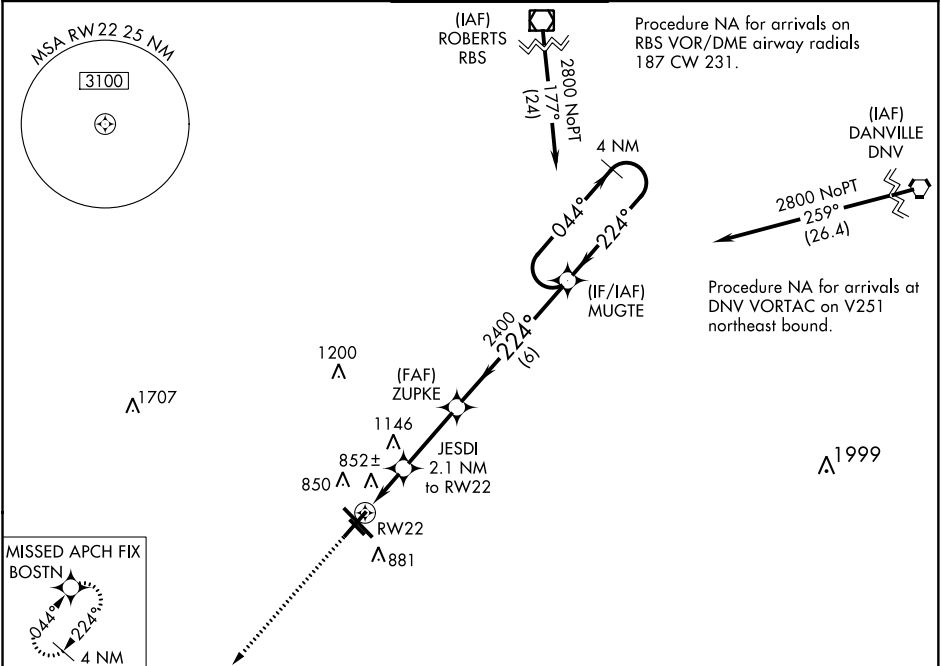
⚠

ASR

For uncompensated Baro-VNAV systems, LNAV/VNAV NA below -21°C (-5°F) or above 54°C (130°F). DME/DME RNP-0.3 NA. When local altimeter setting not received, use Rantoul altimeter setting and increase all DA 41 feet and all MDA 60 feet; increase LNAV Cat C visibility ¼ mile. Baro-VNAV and VDP NA when using Rantoul altimeter setting.

MISSED APPROACH:
Climb to 2300 direct BOSTN and hold.

ATIS 124.85	CHAMPAIGN APP CON ★ 121.35 285.65 (319°-138°) 132.85 290.225 (139°-318°)	CHAMPAIGN TOWER ★ 120.4 (CTAF) 0 229.4	GND CON 121.8	CLNC DEL 128.75	UNICOM 122.95
-----------------------	--	--	-------------------------	---------------------------	-------------------------



ELEV 755

D

TDZE 750

224° to RW22

141

8102X130

14R

8501X150

3812X225

52L

AS

32R

TWR 825

2300 BOSTN

* LNAV only.

JESDI 2.1 NM to RW22

ZUPKE 2400

MUGTE 4 NM Holding Pattern

GP 3.00° TCH 43

1 NM

1.1 NM

2.9 NM

6 NM

CATEGORY

A

B

C

D

LPV DA

1000-1

250 (300-1)

LNAV/VNAV DA

1219-1¼

469 (500-1¾)

LNAV MDA

1120-1

370 (400-1)

1120-1¼

370 (400-1¼)

CIRCLING

1240-1

485 (500-1)

1500-2¼

745 (800-2¼)

1500-2½

745 (800-2½)

HIRL Rwy 14L-32R

MIRL Rwy 4-22

MIRL Rwy 14R-32L