


ILS or LOC RWY 6
DECATUR (DEC)

- | | |
|--|--|
| <p>MALSR</p>  | <p>MISSED APPROACH: Climb to 2200 then climbing left turn to 3100 on heading 270° and AXC VORTAC R-348 to MAROA INT/AXC 14.3 DME and hold.</p> |
|--|--|

MSA DE 25 NM

3100

080° 260°

2300

LOM/IAF ELWIN 275 DE I-DEC 5.8

(IF) FOST INT I-DEC 14 VLA 37.6

2200 060° (8.2)

060° 015° 195°

R-360 R-302 R-262 R-217

1148 1001 719 1246 822 894

MAROA INT 14.3

2035

110.0 CMI Chan 37

LOCALIZER 110.9 I-DEC Chan 46

ADDERS 117.2 AXC Chan 119

ALTERNATE MISSED APCH FIX

110.9 I-DEC Chan 46

UNITI I-DEC 10.4

R-060

(IAF)
PANAE INT
VLA 23.6

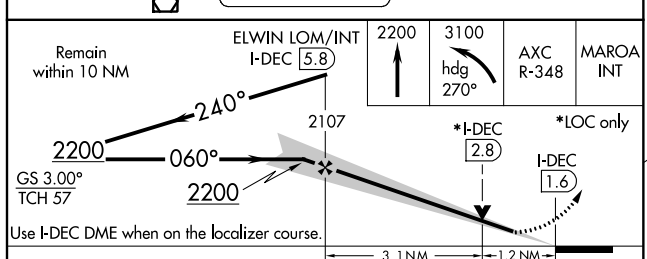
2300
360° (23.6)


VANDALIA
114.3 VLA
Chan 90

Procedure NA for arrivals
at PANAE on V191
southwest bound.

Procedure NA for
arrivals at VLA VOR/DME
on V67 southeast bound.

ELEV 682 D TDZE 677



CATEGORY	A	B	C	D
S-ILS 6 #	877/24		200 (200-½)	
S-LOC 6	1140/24	463 (500-½)	1140/50	463 (500-1)
 CIRCLING	1140-1 458 (500-1)	1240-1 558 (600-1)	1360-2 678 (700-2)	1360-2¼ 678 (700-2¼)

ELEV 682

D

TDZE 677

060° 4.3 NM
from FAF

REIL Rwy 36

HIRL Rwy 6-24

MIRL Rws 12-30 and 18-36

FAF to MAP 4.3 NM

Knots	60	90	120	150	180
Min:Sec	4:18	2:52	2:09	1:43	1:26

EC-3, 31 DEC 2020 to 28 JAN 2021

EC-3, 31 DEC 2020 to 28 JAN 2021