

WAAS CH <b>93738</b> <b>W24A</b>	APP CRS <b>240°</b>	Rwy Idg TDZE <b>682</b> Apt Elev <b>682</b>
--	------------------------	---

RNAV (GPS) RWY 24  
DECATUR (DEC)

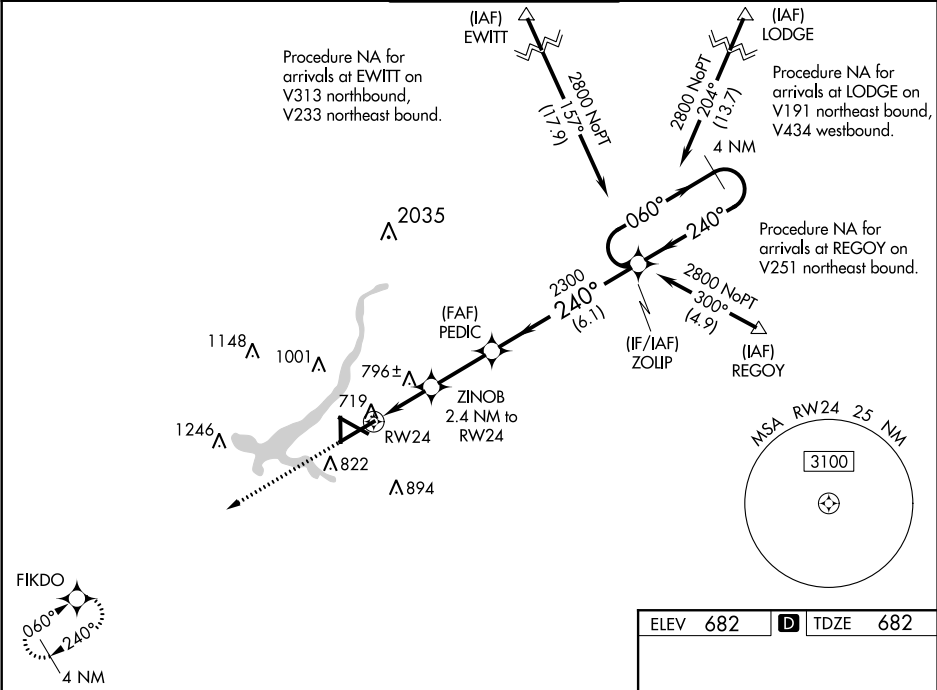
RNP APCH.



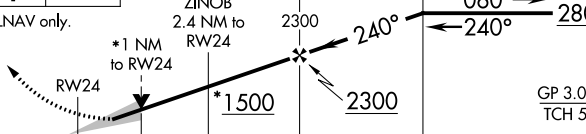

▼ For uncompensated Baro-VNAV systems, LNAV/VNAV NA below -19°C or above 54°C.  
Baro-VNAV and VDP NA when using Logan County altimeter setting.

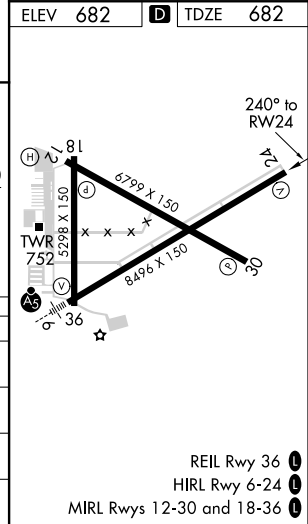
▲ When local altimeter setting not received, use Logan County altimeter setting; increase LPV DA to 1012 feet and visibility all Cats ¼ mile, LNAV/VNAV DA to 1168 feet and visibility all Cats ¼ mile; increase all MDA 80 feet and LNAV visibility Cats C/D ¾ mile, Circling visibility Cats C/D ¼ mile.

MISSED APPROACH:  
Climb to 2300 direct  
FIKDO and hold.

ATIS <b>126.35</b>	CHAMPAIGN APP CON* <b>132.85 290.225</b>	DECATUR TOWER* <b>118.9 (CTAF) 0 291.775</b>	GND CON <b>121.75 291.775</b>	UNICOM <b>122.95</b>
-----------------------	---	---	----------------------------------	-------------------------



2300	FIKDO				
					
*LNAV only.					
					
CATEGORY	A	B	C	D	
LPV DA	932-3/4		250 (300-3/4)		
LNAV/VNAV DA	1088-1 3/8		406 (500-1 3/8)		
LNAV MDA	1060-1		378 (400-1)		
 CIRCLING	1140-1 458 (500-1)	1240-1 558 (600-1)	1360-2 678 (700-2)	1360-2 1/4 678 (700-2 1/4)	



EC-3, 31 DEC 2020 to 28 JAN 2021

EC-3, 31 DEC 2020 to 28 JAN 2021