

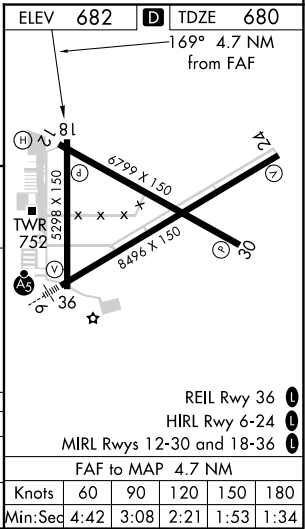
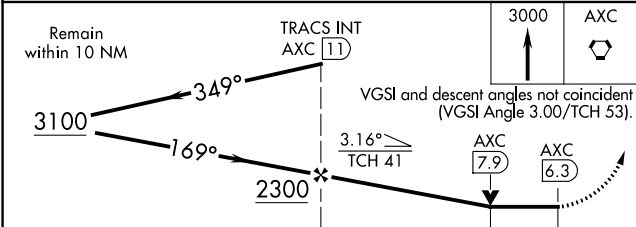
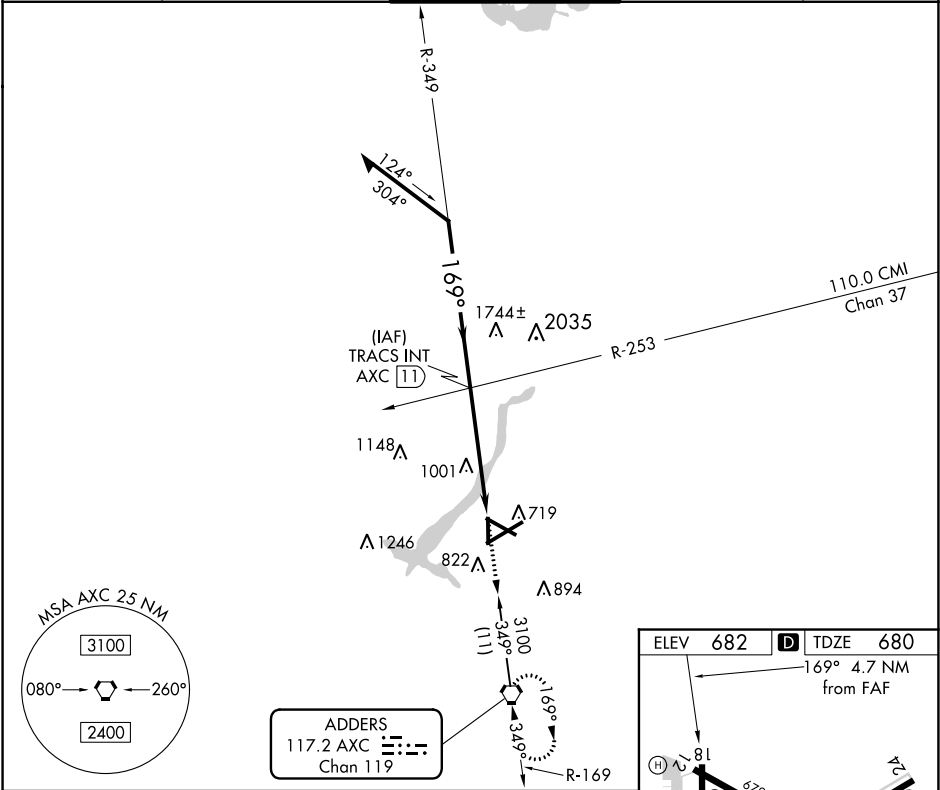
VORTAC AXC	APP CRS	Rwy Idg	5298
117.2	169°	TDZE	680
Chan 119		Apt Elev	682

VOR RWY 18
DECATUR (DEC)

When local altimeter setting not received, use Logan County altimeter setting and increase all MDA 80 feet; increase S-18 Cat C/D and Circling Cat C/D visibility ¼ SM. Rwy 18 helicopter visibility reduction below ¼ SM NA.

MISSED APPROACH: Climb to 3000 direct AXC VORTAC and hold, continue climb-in-hold to 3000.

ATIS 126.35	CHAMPAIGN APP CON ★ 132.85 290.225	DECATUR TOWER ★ 118.9 (CTAF) 291.775	GND CON 121.75 291.775	UNICOM 122.95
----------------	---------------------------------------	---	---------------------------	------------------



CATEGORY	A	B	C	D
S-18	1260-1 580 (600-1)	1260-1½ 580 (600-1½)	1260-1¾ 580 (600-1¾)	1260-2 580 (600-2)
CIRCLING	1260-1 578 (600-1)	1360-2 678 (700-2)	1360-2¼ 678 (700-2¼)	1360-3 678 (700-3)

EC-3, 31 DEC 2020 to 28 JAN 2021

EC-3, 31 DEC 2020 to 28 JAN 2021