

LOM UI	APP CRS	Rwy Idg	7098
293	038°	TDZE	762
		Apt Elev	769

NDB RWY 4

QUINCY RGNL-BALDWIN FIELD (UIN)

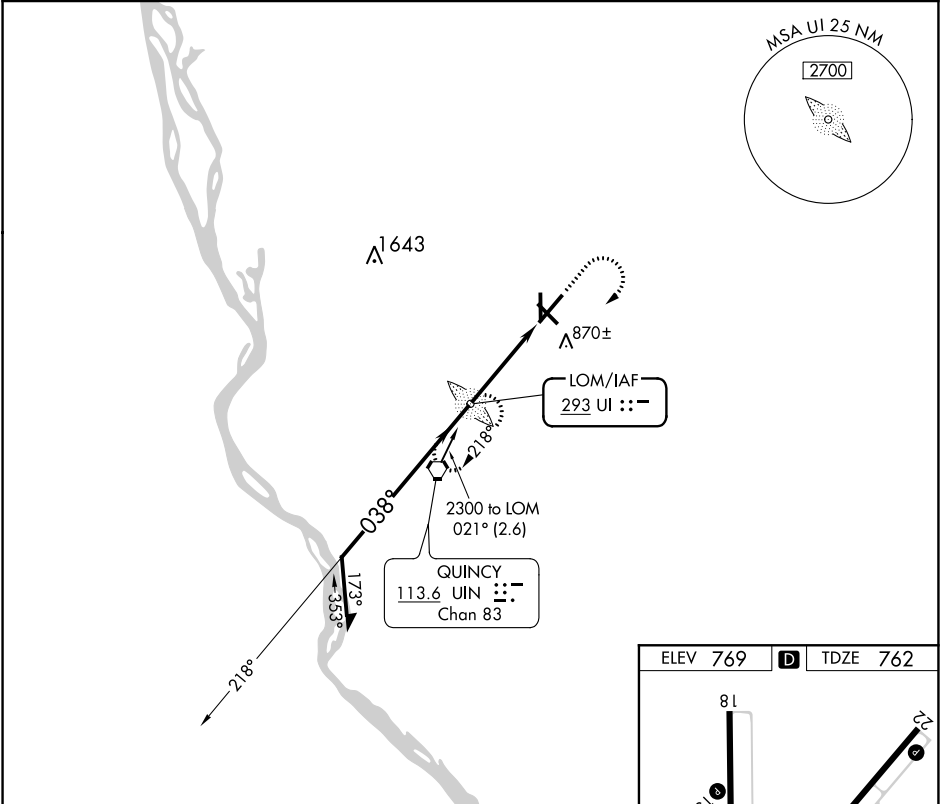
▼

▲ NA

MALSR

MISSED APPROACH: Climb to 1500 then climbing right turn to 2300 direct UI LOM and hold

ASOS 121.425	KANSAS CITY CENTER 126.225 317.775	UNICOM 123.0 (CTAF) 0
-----------------	---------------------------------------	--------------------------



Remain within 10 NM

2300

218°

038°

2100

3.16°

TCH 45

3.9 NM

1500

2300

UI

CATEGORY	A	B	C	D
S-4	1180-3/4	418 (500-3/4)		1180-1 418 (500-1)
CIRCLING	1200-1 431 (500-1)	1220-1 451 (500-1)	1220-1 1/2 451 (500-1 1/2)	1320-2 551 (600-2)

ELEV 769

TDZE 762

038° 3.9 NM

from FAF

HIRL Rwy 4-22

REIL Rws 18 and 22

MIRL Rws 13-31 and 18-36

FAF to MAP 3.9 NM

Knots	60	90	120	150	180
Min:Sec	3:54	2:36	1:57	1:34	1:18