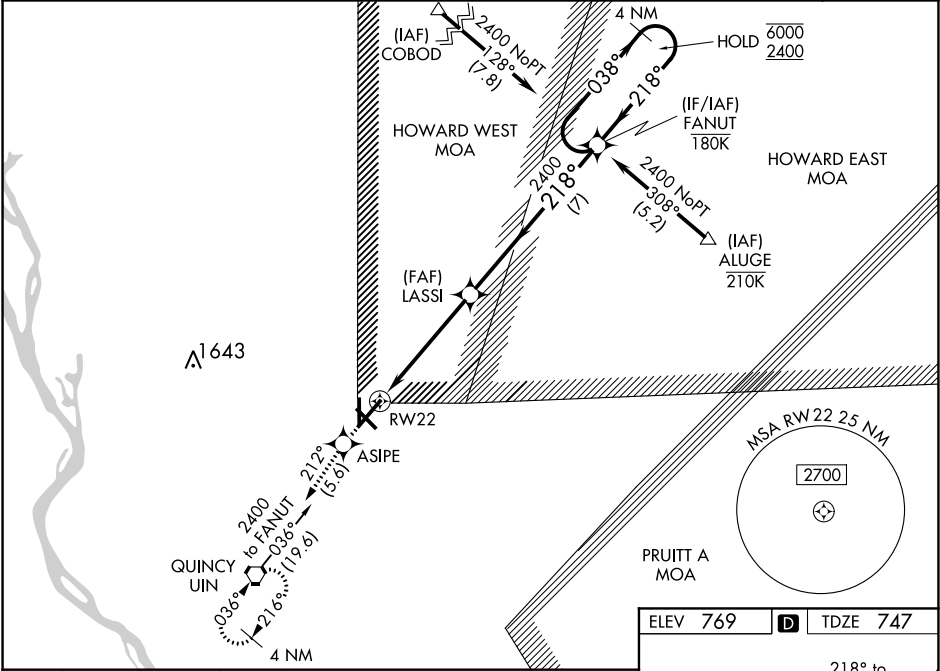


WAAS CH 45705 W22A	APP CRS 218°	Rwy Idg TDZE 747 Apt Elev 769
--	------------------------	---

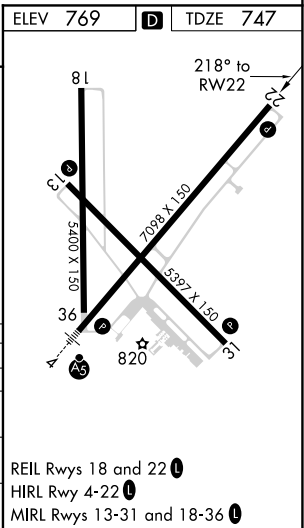
RNAV (GPS) RWY 22
QUINCY RGNL-BALDWIN FIELD (UIN)

RNP APCH.	MISSED APPROACH: Climb to 2400 direct ASIFE and on track 212° to UIN VORTAC and hold.
⚠ For uncompensated Baro-VNAV systems, LNAV/VNAV NA below -16°C or above 54°C.	

ASOS 121.425	KANSAS CITY CENTER 126.225 317.775	UNICOM 123.0 (CTAF) 0
------------------------	--	---------------------------------



2400 ↑	ASIFE 	tr 212°	UIN 	
* LNAV only.				
CATEGORY	A	B	C	D
LPV DA	997-1 250 (300-1)			
LNAV/VNAV DA	1159-1½ 412 (400-1½)			
LNAV MDA	1220-1 473 (500-1)		1220-1⅜ 473 (500-1⅜)	
CIRCLING	1220-1 451 (500-1)	1220-1 451 (500-1)	1240-1½ 471 (500-1½)	1320-2 551 (600-2)



EC-3, 31 DEC 2020 to 28 JAN 2021

EC-3, 31 DEC 2020 to 28 JAN 2021