

WAAS CH <b>97610</b> <b>W36A</b>	APP CRS <b>357°</b>	Rwy Idg TDZE <b>759</b> Apt Elev <b>769</b>
--	------------------------	---

RNAV (GPS) RWY 36

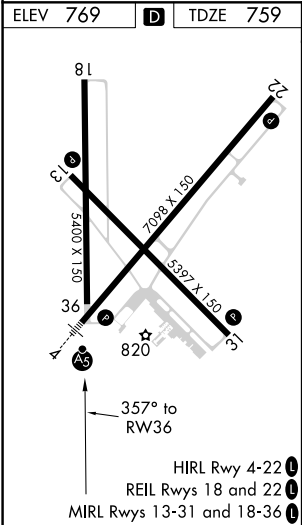
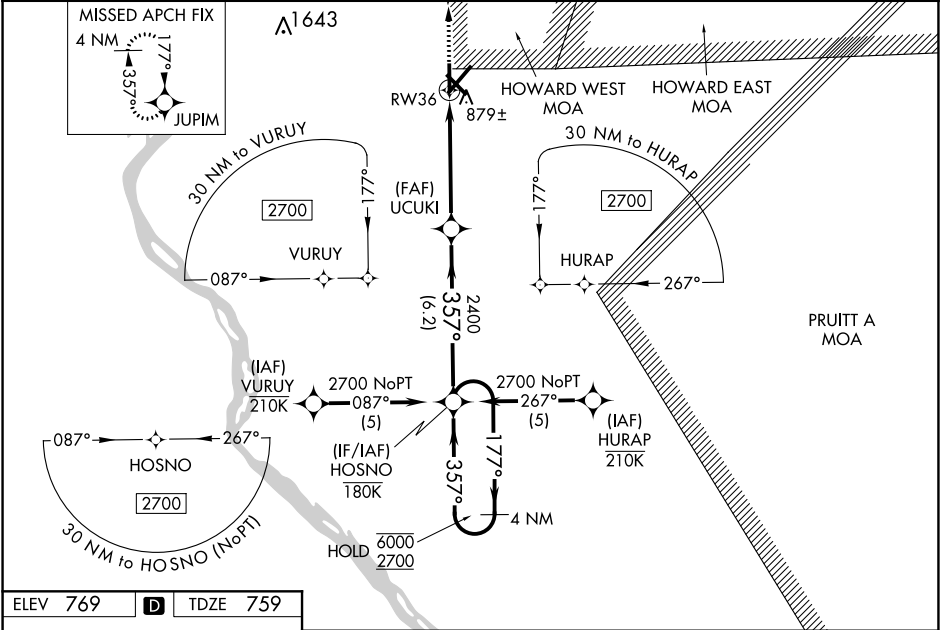
QUINCY RGNL-BALDWIN FIELD (UIN)

RNP APCH.

For uncompensated Baro-VNAV systems, LNAV/VNAV NA below -16° C or above 54° C.

MISSED APPROACH:  
Climb to 2700 direct JUPIM and hold.

ASOS <b>121.425</b>	KANSAS CITY CENTER <b>126.225 317.775</b>	UNICOM <b>123.0 (CTAF) 0</b>
------------------------	--	---------------------------------



2700 JUPIM

\* LNAV only.

RW36

UCUKI 2400

HOSNO

4 NM Holding Pattern

1.1 NM

3.9 NM

6.2 NM

177°

357°

357°

177°

6000

2700

GP 3.00°

TCH 45

CATEGORY	A	B	C	D
LPV DA	1073-1 314 (400-1)			
LNAV/VNAV DA	1181-1½ 422 (500-1½)			
LNAV MDA	1140-1 381 (400-1)			1140-1¼ 381 (400-1¼)
CIRCLING	1180-1 411 (500-1)	1220-1 451 (500-1)	1240-1½ 471 (500-1½)	1320-2 551 (600-2)