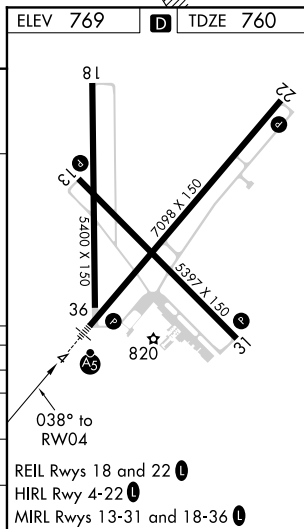
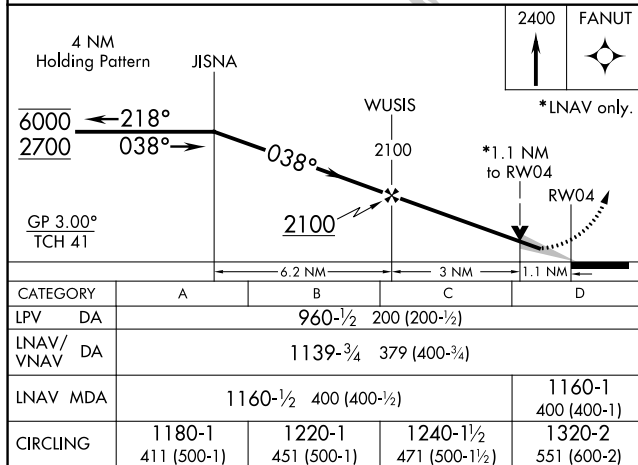
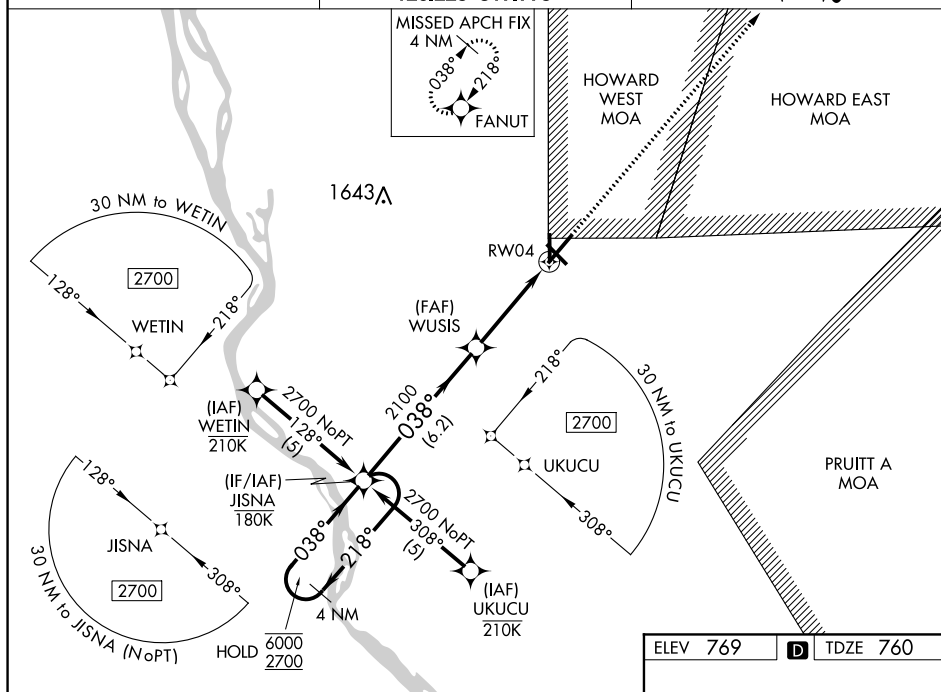


# RNAV (GPS) RWY 4

## QUINCY RGNL-BALDWIN FIELD (UIN)

**MISSED APPROACH:**  
Climb to 2400 direct  
FANUT and hold.

**T** For uncompensated Baro-VNAV systems, LNAV/VNAV NA below -16° C or  
**A** above 54° C. For inop ALS increase LNAV Cat D visibility to 1¼ SM.

UNICOM  
123.0 (CTAF) **L**

EC-3, 31 DEC 2020 to 28 JAN 2021