

WAAS CH <b>42902</b> <b>W36A</b>	APP CRS <b>002°</b>	Rwy Idg <b>8201</b> TDZE <b>684</b> Apt Elev <b>695</b>
--	------------------------	---

## RNAV (GPS) RWY 36

GREEN BAY-AUSTIN STRAUBEL INTL (GRB)

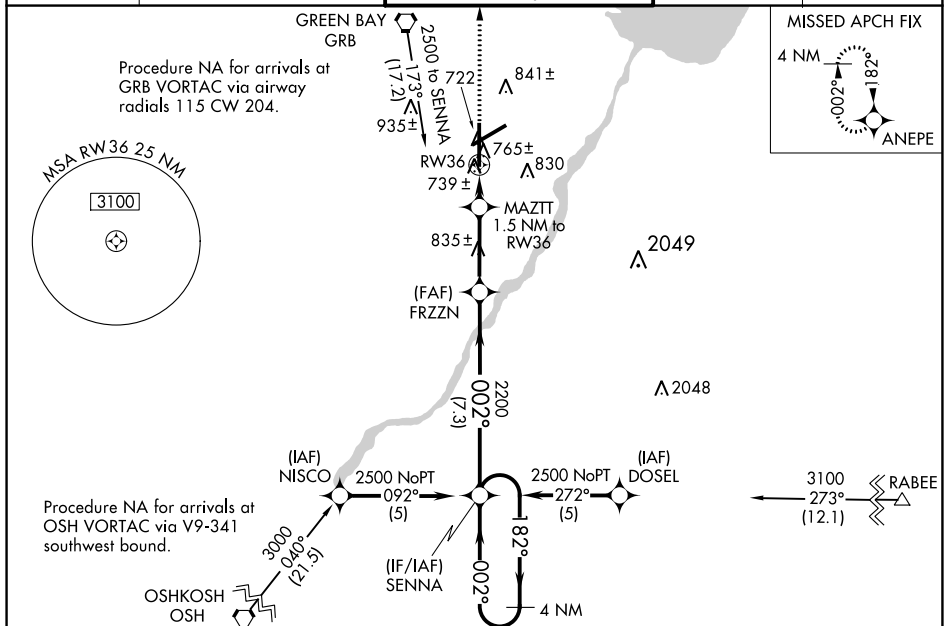
ASR

For uncompensated Baro-VNAV systems, LNAV/VNAV NA below -16°C (4°F) or above 47°C (116°F).  
DME/DME RNP-0.3 NA.  
Inoperative table does not apply to LNAV Cat D.

MALSR

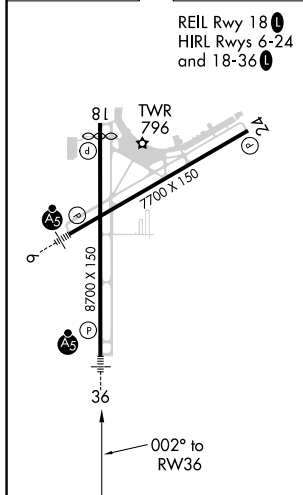
**MISSED APPROACH:** Climb to 2500 direct ANEPE and hold.

ATIS <b>124.1</b>	GREEN BAY APP CON★ <b>119.4 338.2</b>	GREEN BAY TOWER★ <b>118.7(CTAF) 0 257.8</b>	GND CON <b>121.9</b>	CLNC DEL <b>121.75</b>
----------------------	--	--	-------------------------	---------------------------



ELEV 695	<b>D</b>	TDZE 684
----------	----------	----------

REIL Rwy 18 **L**  
HIRL Rwy 6-24  
and 18-36 **L**



4 NM Holding Pattern

2500

\*LNAV only

MAZTT 1.5 NM to RW36

FRZZN

SENN A

182° →

← 002°

2500

\*0.9 NM to RW36

RW36

\*1200

2200

GP 3.00° TCH 50

0.9 0.6 NM 3.1 NM 7.3 NM

CATEGORY	A	B	C	D
LPV DA	884/24 200 (200-½)			
LNAV/VNAV DA	1097/50 413 (500-1)			
LNAV MDA	1020/24 336 (400-½)			1020/50 336 (400-1)
CIRCLING	1200-1	505 (600-1)	1200-1½ 505 (600-1½)	1260-2 565 (600-2)