


WAAS CH <b>63015</b> <b>W06A</b>	APP CRS <b>062°</b>	Rwy Idg <b>7699</b> TDZE <b>692</b> Apt Elev <b>695</b>
--	------------------------	---

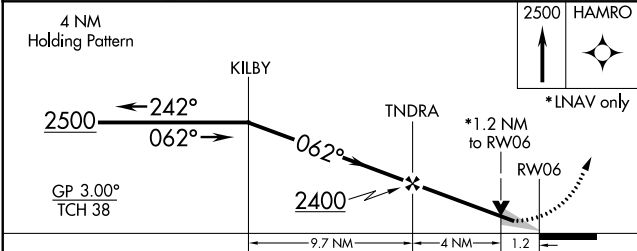
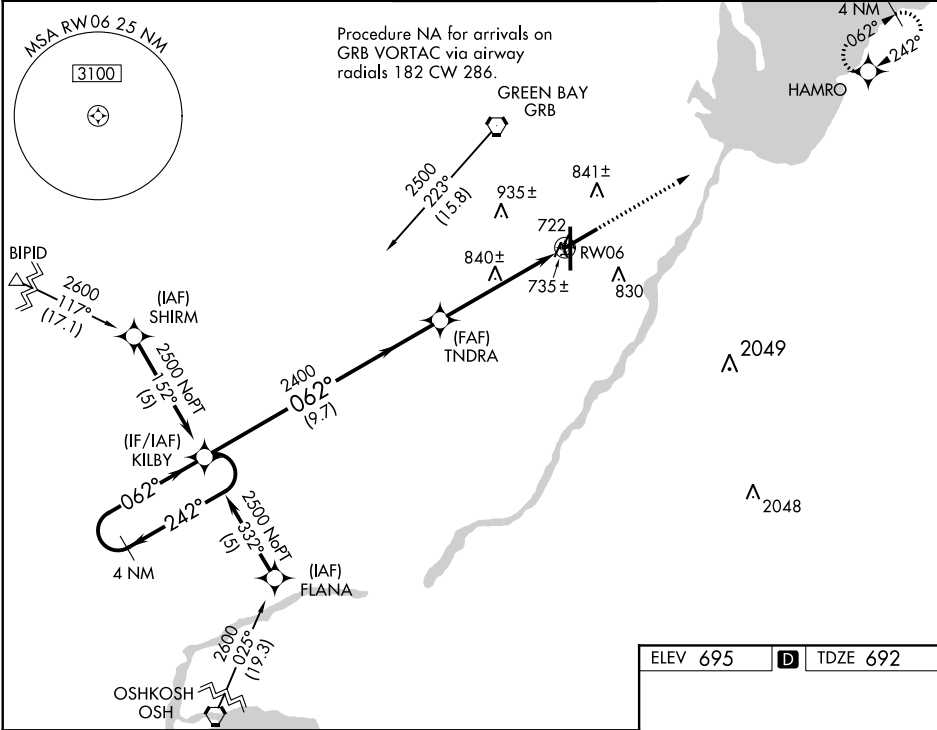
**RNAV (GPS) RWY 6**  
GREEN BAY-AUSTIN STRAUBEL INTL (GRB)

**▼** For uncompensated Baro-VNAV systems, LNAV/VNAV NA below -1.6°C (4°F) or above 47°C (116°F). DME/DME RNP-0.3 NA. For inoperative MALSR, increase ASR LNAV/VNAV Cat D visibility to RVR 5000 and LNAV Cat D visibility to RVR 6000.

**MALSR** 

**MISSED APPROACH:** Climb to 2500 direct HAMRO and hold.

ATIS <b>124.1</b>	GREEN BAY APP CON★ <b>119.4 338.2</b>	GREEN BAY TOWER ★ <b>118.7 (CTAF) 0 257.8</b>	GND CON <b>121.9</b>	CLNC DEL <b>121.75</b>
----------------------	--	--	-------------------------	---------------------------



CATEGORY	A	B	C	D
LPV DA		892/24	200 (200-½)	
LNAV/VNAV DA		1000/24 308 (400-½)		1000/40 308 (400-¾)
LNAV MDA		1100/24 408 (500-½)		1100/50 408 (500-1)
CIRCLING	1200-1 505 (600-1)		1200-1½ 505 (600-1½)	1260-2 565 (600-2)

