

LOC/DME I-EAU  
**109.5**  
Chan **32**

APP CRS  
**044°**

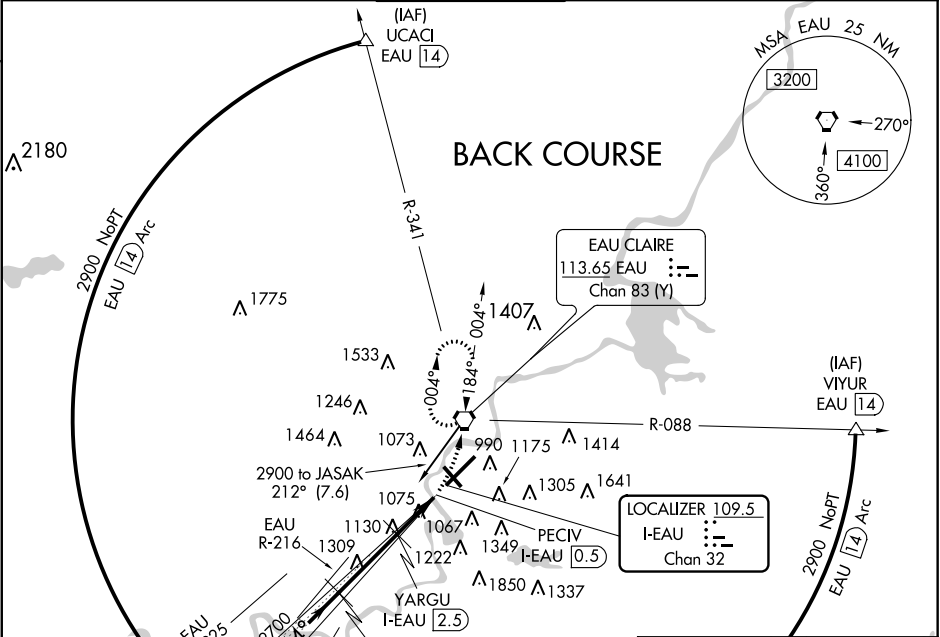
Rwy Idg  
TDZE  
Apt Elev  
**7701**  
**889**  
**913**

LOC BC RWY 4  
CHIPPEWA VALLEY RGNL (EAU)

**▼** DME required. VDP NA with Rice Lake Rgnl - Carl's Field airport altimeter setting. When local altimeter setting not received, use Rice Lake Rgnl - Carl's Field airport altimeter setting increase all MDA 120 feet, increase S-4 Cats C and D and Circling Cat C visibility ¼ mile. Circling Rwy 32 NA at night.

**▲** MISSED APPROACH: Climb to 2900 then climbing left turn direct EAU VORTAC and hold.

ATIS <b>126.025</b>	MINNEAPOLIS CENTER <b>125.3 335.6</b>	EAU CLAIRE TOWER★ <b>118.575 (CTAF) 0</b>	GND CON <b>120.925</b>	UNICOM <b>122.95</b>
------------------------	------------------------------------------	----------------------------------------------	---------------------------	-------------------------



ELEV 913 **D** TDZE 889

HIRL Rwy 4-22 **0**  
MIRL Rwy 14-32 **0**  
REIL Rws 4 and 14 **0**

Remain within 10 NM

JASAK I-EAU **5.4**

Use I-EAU DME when on the localizer course.

YARGU I-EAU **2.5**

2900

2700

Disregard GS indications.

3.00° TCH 44

1740

3 NM

1.2 NM

0.8 NM

0.6 NM

CATEGORY	A	B	C	D
S-4	1380-1 491 (500-1)	1380-1 3/8 491 (500-1 3/8)		
CIRCLING	1480-1 567 (600-1)	1540-1 627 (700-1)	1660-2 1/4 747 (800-2 1/4)	2200-3 1287 (1300-3)

EC-3, 31 DEC 2020 to 28 JAN 2021

EC-3, 31 DEC 2020 to 28 JAN 2021