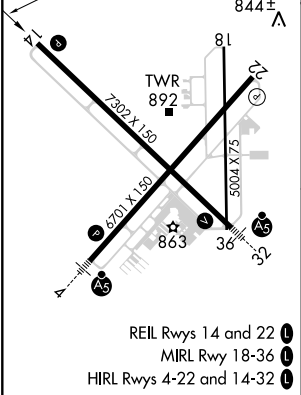
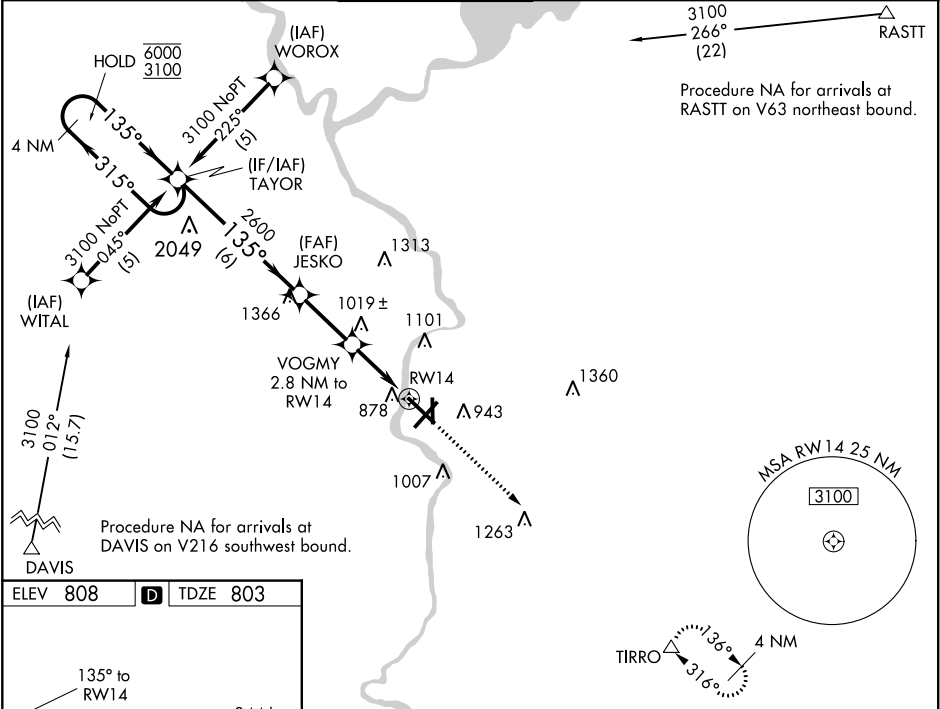


WAAS CH 86617 W14A	APP CRS 135°	Rwy Idg TDZE 803 Apt Elev 808
--	------------------------	---

RNAV (GPS) RWY 14
SOUTHERN WISCONSIN RGNL (JVL)

RNP APCH.	<p>⚠ Circling Rwy 18 NA at night. Rwy 14 helicopter visibility reduction below $\frac{3}{4}$ SM NA. Baro-VNAV NA when using Rockford altimeter setting. For uncompensated Baro-VNAV systems, LNAV/VNAV NA below -16°C or above 47°C. VDP NA when using Rockford altimeter setting. When local altimeter setting not received, use Rockford altimeter setting and increase all DA 69 feet and all MDA 80 feet; increase LPV all Cats, LNAV/VNAV all Cats, LNAV Cats C and D and Circling Cat D visibility $\frac{1}{4}$ SM.</p>	MISSED APPROACH: Climb to 3100 direct TIRRO and hold.
-----------	--	---

ATIS 128.25	ROCKFORD APP CON 121.0 327.0	JANESVILLE TOWER ★ 118.8(CTAF) 225.4	GND CON 121.65	CLNC DEL 121.65	UNICOM 122.95
-----------------------	--	--	--------------------------	---------------------------	-------------------------



4 NM Holding Pattern TAYOR				3100	TIRRO
6000 ← 315° 3100 → 135°				*LNAV only.	
GP 3.00° TCH 60				RWY 14	
6 NM 2.6 NM 1.5 NM 1.3 NM					
CATEGORY	A	B	C	D	
LPV DA	1003- $\frac{3}{4}$		200 (200- $\frac{3}{4}$)		
LNAV/VNAV DA	1222-1 $\frac{1}{2}$		419 (500-1 $\frac{1}{2}$)		
LNAV MDA	1280-1	477 (500-1)	1280-1 $\frac{1}{4}$ 477 (500-1 $\frac{1}{4}$)	1280-1 $\frac{1}{2}$ 477 (500-1 $\frac{1}{2}$)	
CIRCLING	1280-1	472 (500-1)	1280-1 $\frac{1}{2}$ 472 (500-1 $\frac{1}{2}$)	1420-2 612 (700-2)	

EC-3, 31 DEC 2020 to 28 JAN 2021

EC-3, 31 DEC 2020 to 28 JAN 2021