

APP CRS  
**316°**

Rwy Idg  
**7302**

TDZE  
**806**

Apt Elev  
**808**

**RNAV (GPS) RWY 32**

SOUTHERN WISCONSIN RGNL (JVL)

RNP APCH.

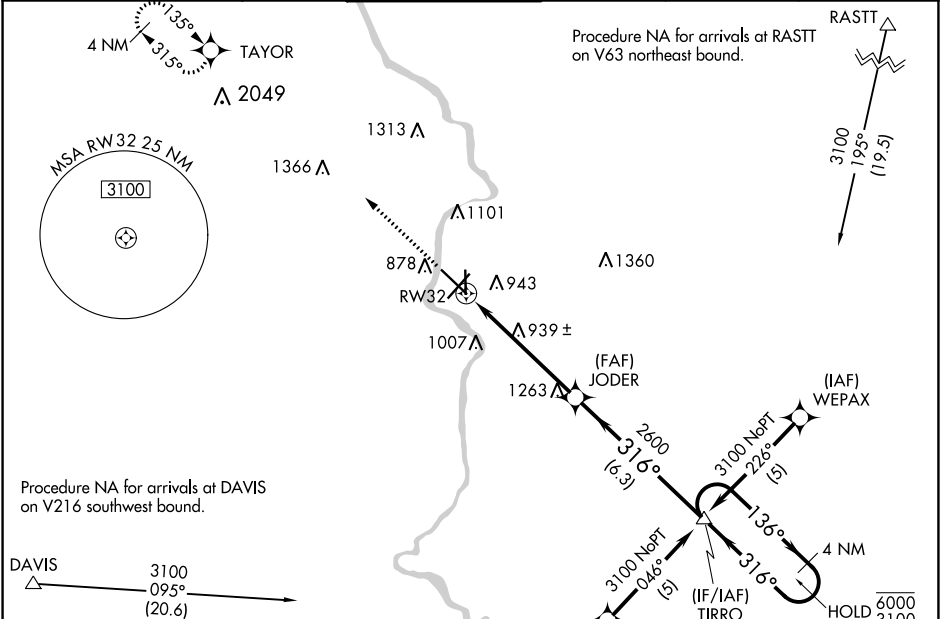
NA

⚠ Circling Rwy 18 NA at night. Baro-VNAV and VDP NA when using Rockford altimeter setting. For uncompensated Baro-VNAV systems, procedure NA below -16° C or above 54°C. When local altimeter setting not received use Rockford altimeter setting and increase all DA/MDAs 80 feet. For inop ALS, increase LNAV Cat A/B visibility to 1 SM, and Cat C/D to 1½ SM.

MALSR

MISSED APPROACH:  
Climb to 3100 direct TAYOR and hold.

ATIS <b>128.25</b>	ROCKFORD APP CON <b>121.0 327.0</b>	JANESVILLE TOWER ★ <b>118.8(CTAF) 225.4</b>	GND CON <b>121.65</b>	CLNC DEL <b>121.65</b>	UNICOM <b>122.95</b>
-----------------------	----------------------------------------	------------------------------------------------	--------------------------	---------------------------	-------------------------



ELEV 808

**D**

TDZE 806



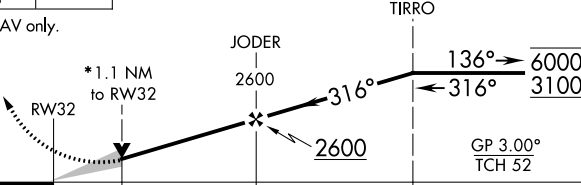
Inset chart showing local navigation aids and terrain. Key features include:

- Waypoints:** 844 ± A, 81, 892, 863, 808, 806, 804, 802, 800, 798, 796, 794, 792, 790, 788, 786, 784, 782, 780, 778, 776, 774, 772, 770, 768, 766, 764, 762, 760, 758, 756, 754, 752, 750, 748, 746, 744, 742, 740, 738, 736, 734, 732, 730, 728, 726, 724, 722, 720, 718, 716, 714, 712, 710, 708, 706, 704, 702, 700, 698, 696, 694, 692, 690, 688, 686, 684, 682, 680, 678, 676, 674, 672, 670, 668, 666, 664, 662, 660, 658, 656, 654, 652, 650, 648, 646, 644, 642, 640, 638, 636, 634, 632, 630, 628, 626, 624, 622, 620, 618, 616, 614, 612, 610, 608, 606, 604, 602, 600.
- Obstacles:** 844 ± A, 81, 892, 863, 808, 806, 804, 802, 798, 796, 794, 792, 790, 788, 786, 784, 782, 780, 778, 776, 774, 772, 770, 768, 766, 764, 762, 760, 758, 756, 754, 752, 750, 748, 746, 744, 742, 740, 738, 736, 734, 732, 730, 728, 726, 724, 722, 720, 718, 716, 714, 712, 710, 708, 706, 704, 702, 700, 698, 696, 694, 692, 690, 688, 686, 684, 682, 680, 678, 676, 674, 672, 670, 668, 666, 664, 662, 660, 658, 656, 654, 652, 650, 648, 646, 644, 642, 640, 638, 636, 634, 632, 630, 628, 626, 624, 622, 620, 618, 616, 614, 612, 610, 608, 606, 604, 602, 600.

REIL Rwy 14 and 22

MIRL Rwy 18-36

HIRL Rwy 4-22 and 14-32

3100		TAYOR		4 NM Holding Pattern	
					
* LNAV only.					
					
CATEGORY	A	B	C	D	
LNAV/VNAV	DA	1220-1 414 (500-1)			
LNAV	MDA	1200-¾ 394 (400-¾)		1200-1 394 (400-1)	
CIRCLING	1260-1 452 (500-1)		1280-1½ 472 (500-1½)	1420-2 612 (700-2)	