

LOC I-UDY	APP CRS	Rwy Idg	10002
109.55	068°	TDZE	742
		Apt Elev	742

ILS RWY 7 (SA CAT I)

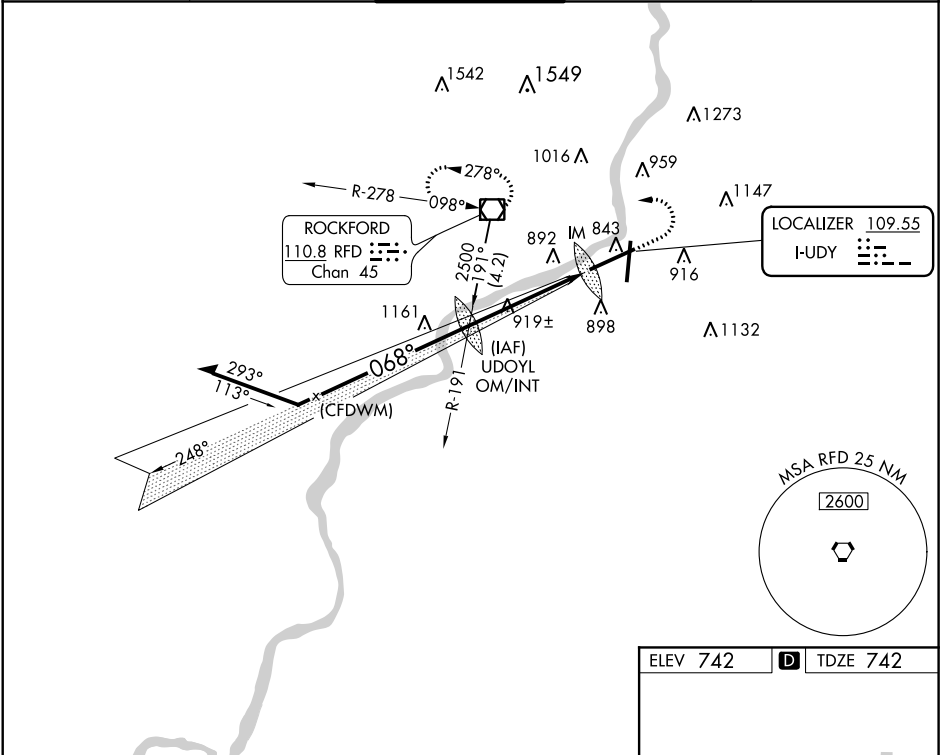
CHICAGO/ROCKFORD INTL (RFD)

Requires specific OPSPEC, MSPEC, or LOA approval and use of HUD to DH.

ALS-F-2

MISSED APPROACH: Climb to 2600 then climbing left turn to 2600 direct RFD VOR/DME and hold.

ATIS 127.6	ROCKFORD APP CON 121.0 327.0	ROCKFORD TOWER 118.1 290.375	GND CON 121.9 290.375	CLNC DEL 119.25
---------------	---------------------------------	---------------------------------	--------------------------	--------------------



VGSI and ILS glidepath not coincident (VGSI Angle 3.00/TCH 69).

1700

2600

RFD

Remain within 10 NM

UDOYL OM/INT

2500

248°

2353

068°

2500

GS 3.00°

TCH 60

IM

4.8 NM

1243'

CATEGORY	A	B	C	D
S-ILS 7	RA 164/14 150 DA 892			

SA CATEGORY I ILS - SPECIAL AIRCREW & AIRCRAFT CERTIFICATION REQUIRED

ELEV 742

TDZE 742

61

65

65

770

798

0.3% DOWN

10002 X 150

0.6% UP

8200 X 150

TWR

770

798

REIL Rwy 19 and 25
HIRL Rwy 1-19 and 7-25
TDZ/CL Rwy 1 and 7