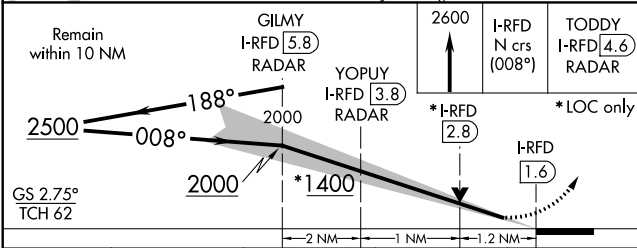
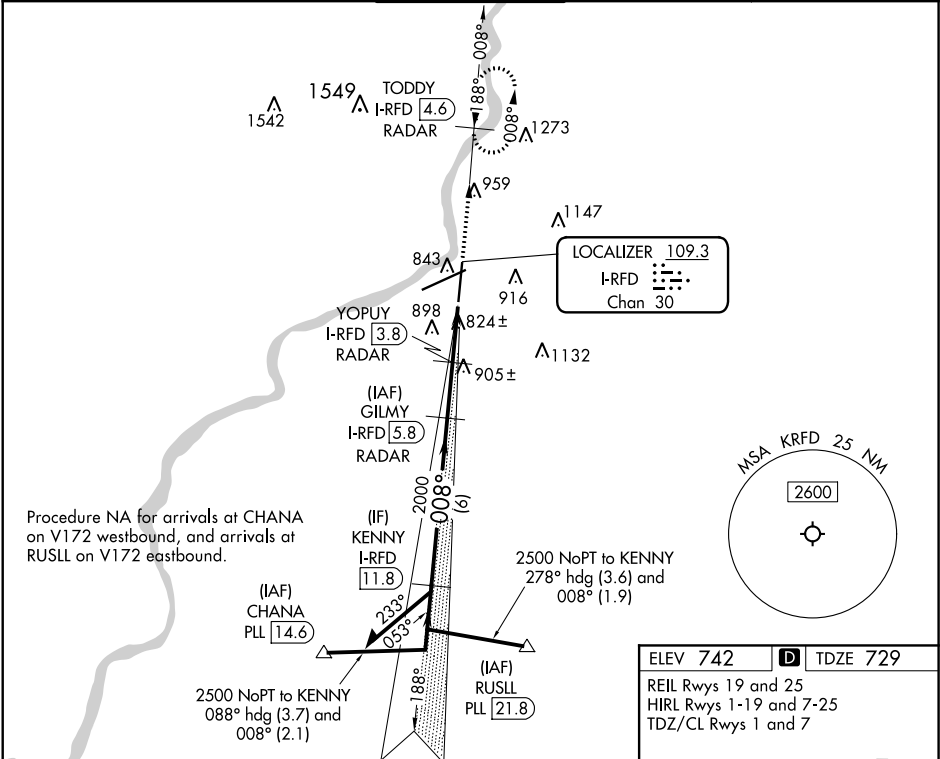


LOC/DME I-RFD <b>109.3</b> Chan <b>30</b>	APP CRS <b>008°</b>	Rwy Idg <b>8199</b> TDZE <b>729</b> Apt Elev <b>742</b>	ILS or LOC RWY 1 CHICAGO/ROCKFORD INTL (RFD)	
---	------------------------	---	---	--

DME or RADAR required.		MALSR	MISSED APPROACH: Climb to 2600 on I-RFD localizer N course (008°) to TODDY/4.6 DME/RADAR and hold, continue climb-in-hold to 2600.
ASR	For inop ALS, increase S-LOC 1 Cat C/D visibility to RVR 6000.		

ATIS <b>127.6</b>	ROCKFORD APP CON <b>121.0 327.0</b>	ROCKFORD TOWER <b>118.1 290.375</b>	GND CON <b>121.9 290.375</b>	CLNC DEL <b>119.25</b>
----------------------	--	--	---------------------------------	---------------------------



ELEV 742	TDZE 729
REIL Rwy 19 and 25 HIRL Rwy 1-19 and 7-25 TDZ/CL Rwy 1 and 7	
FAF to MAP 4.2 NM	
Knots	60 90 120 150 180
Min:Sec	4:12 2:48 2:06 1:41 1:24