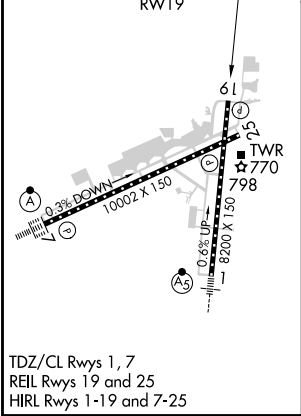
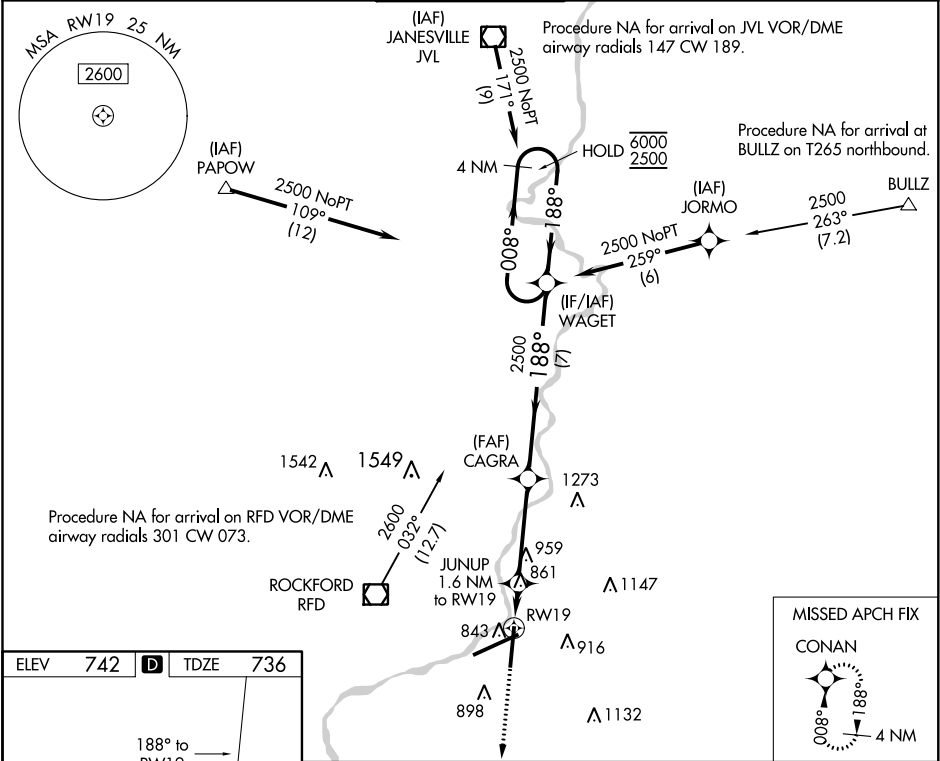


WAAS CH 40435 W19A	APP CRS 188°	Rwy Idg TDZE 736 Apt Elev 742
--	------------------------	---

RNAV (GPS) RWY 19
CHICAGO/ROCKFORD INTL (RFD)

RNP APCH.		For uncompensated Baro-VNAV systems, LNAV/VNAV NA below -20°C or above 54°C.		MISSED APPROACH: Climb to 2500 direct CONAN and hold.
ATIS 127.6	ROCKFORD APP CON 121.0 327.0	ROCKFORD TOWER 118.1 290.375	GND CON 121.9 290.375	CLNC DEL 119.25



2500 ↑ CONAN		VGSI and RNAV glidepath not coincident (VGSI Angle 3.00/TCH 75).		4 NM Holding Pattern	
*LNAV only.		JUNUP 1.6 NM to RW19		WAGET	
RW19		*1 NM to RW19		188° → 008° ← 188°	
1 NM		*1280		2500	
0.6 NM		3.8 NM		7 NM	
CATEGORY		A		B	
LPV DA		936-3/4		200 (200-3/4)	
LNAV/ VNAV DA		1039-1		303 (300-1)	
LNAV MDA		1120-1 384 (400-1)		1120-1 384 (400-1 1/8)	
CIRCLING		1220-1 478 (500-1)		1280-1 538 (600-1)	
		1320-1 578 (600-1 1/2)		1460-2 718 (800-2 1/4)	

EC-3, 31 DEC 2020 to 28 JAN 2021

EC-3, 31 DEC 2020 to 28 JAN 2021