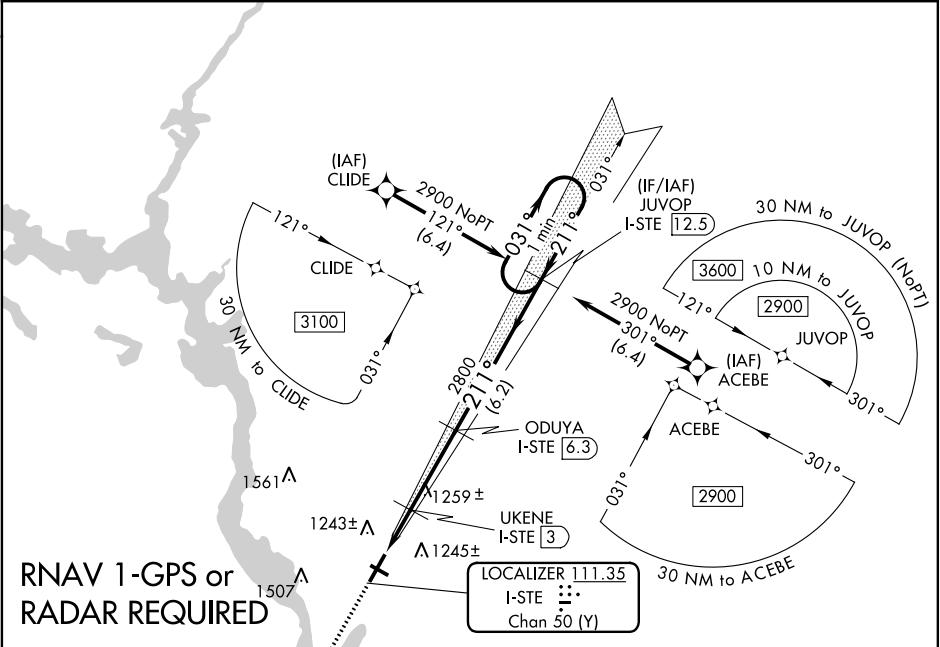


LOC/DME I-STE	APP CRS	Rwy Idg	6028
111.35	211°	TDZE	1110
Chan 50 (Y)		Apt Elev	1110

ILS or LOC RWY 21
STEVENS POINT MUNI (STE)

<p>▼ DME required. RNAV 1-GPS required. For inoperative ALS, increase S-LOC 21 Cat C/D visibility to 1 1/8 SM. Inoperative table does not apply to S-ILS 21 all Cats.</p> <p>▲ NA</p>	<p>MALS</p> <p>MISSD APPROACH: Climb to 2800 direct FAYYE and hold.</p>
---	---

AWOS-3 119.275	MINNEAPOLIS CENTER 124.4 317.7	UNICOM 122.7 (CTAF) 0
-------------------	-----------------------------------	--------------------------



MISSED APCH FIX FAYYE	2800 FAYYE	ODUYA I-STE [6.3]	JUVOP I-STE [12.5]	One Minute Holding Pattern
VGSI and ILS glidepath not coincident (VGSI Angle 3.00/TCH 37).				
* LOC only.				
I-STE [1.1]	* I-STE [2.3]	UKENE I-STE [3]	2800	031° → 2900
1760*			211° ← 211°	Use I-STE DME when on localizer course.
1.2 NM	0.7 NM	3.3 NM	6.2 NM	GS 3.00° TCH 44
CATEGORY	A	B	C	D
S-ILS 21		1360-3/4 250 (300-3/4)		
S-LOC 21	1520-3/4 410 (500-3/4)		1520-1 410 (500-1)	
CIRCLING	1580-1 470 (500-1)	1600-1 490 (500-1)	1820-2 710 (800-2)	1820-2 1/4 710 (800-2 1/4)

ELEV 1110	TDZE 1110
211° 5.2 NM from FAF	
1165	
3635 X 75	
REIL Rwy 30	
HIRL Rwy 3-21 and 12-30	
FAF to MAP 5.2 NM	
Knots	60 90 120 150 180
Min:Sec	5:12 3:28 2:36 2:05 1:44