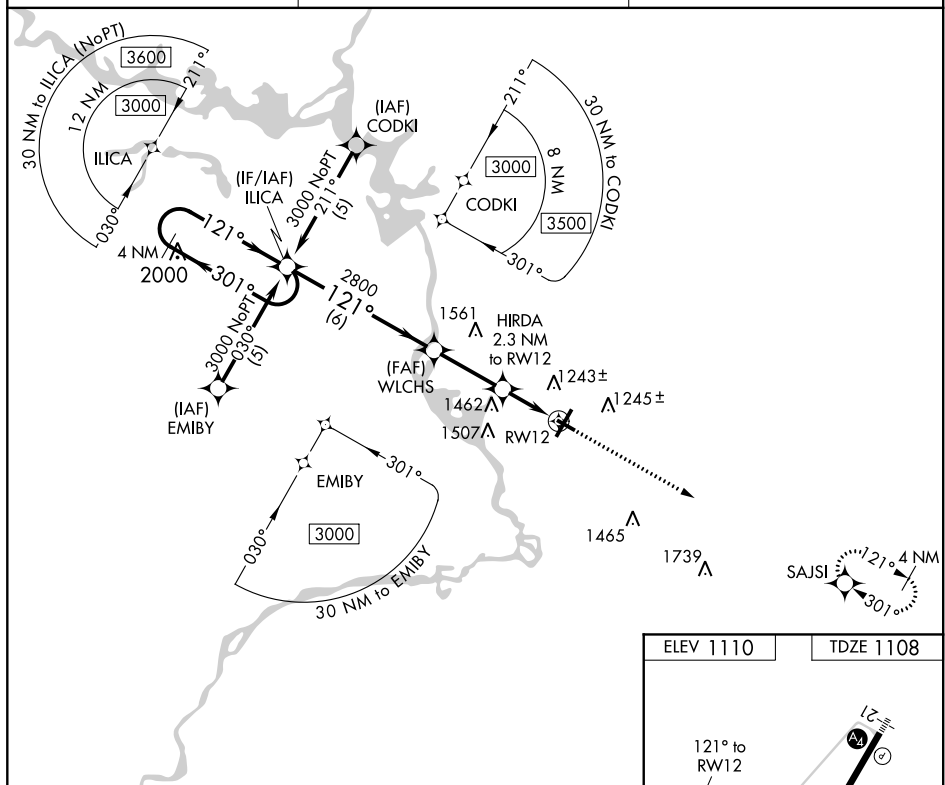


RNAV (GPS) RWY 12
STEVENS POINT MUNI (STE)


MISSED APPROACH: Climb to 3000 direct SAJSI and hold.

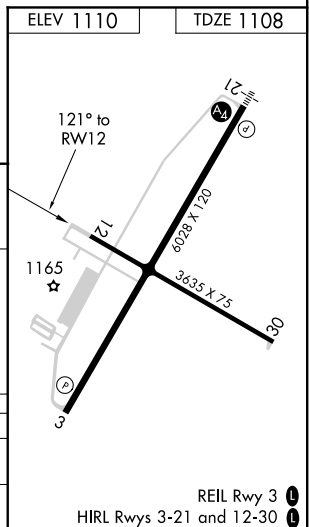
MINNEAPOLIS CENTER
124.4 317.7

UNICOM
122.7 (CTAF) **L**



The diagram illustrates a sample RNAV chart segment. It begins with a holding pattern at 3000 feet, labeled "4 NM Holding Pattern". From the holding pattern, the flight path proceeds through several waypoints: ILICA, WLCHS, and HIRDA. Key navigation parameters include headings (301°, 121°), distances (3.05 NM to TCH 40, 1.9 NM to RWY12), and altitudes (3000, 2800, 1880). A compass rose indicates the direction of travel, and a scale bar shows distances of 6 NM, 2.8 NM, 0.4 NM, and 1.9 NM.

CATEGORY	A	B	C	D
LNAV MDA	1760-1	652 (700-1)	1760-1 $\frac{3}{4}$ 652 (700-1 $\frac{3}{4}$)	1760-2 652 (700-2)
 CIRCLING	1760-1	650 (700-1)	1820-2 710 (800-2)	1820-2 $\frac{1}{4}$ 710 (800-2 $\frac{1}{4}$)



DEC-3, 31 DEC 2020 to 28 JAN 2021