

| | | |
|--|------------------------|---|
| WAAS CH 86511 W21A | APP CRS 211° | Rwy Idg 6028 TDZE 1110 Apt Elev 1110 |
|--|------------------------|---|

RNAV (GPS) RWY 21

STEVENS POINT MUNI (STE)

▼

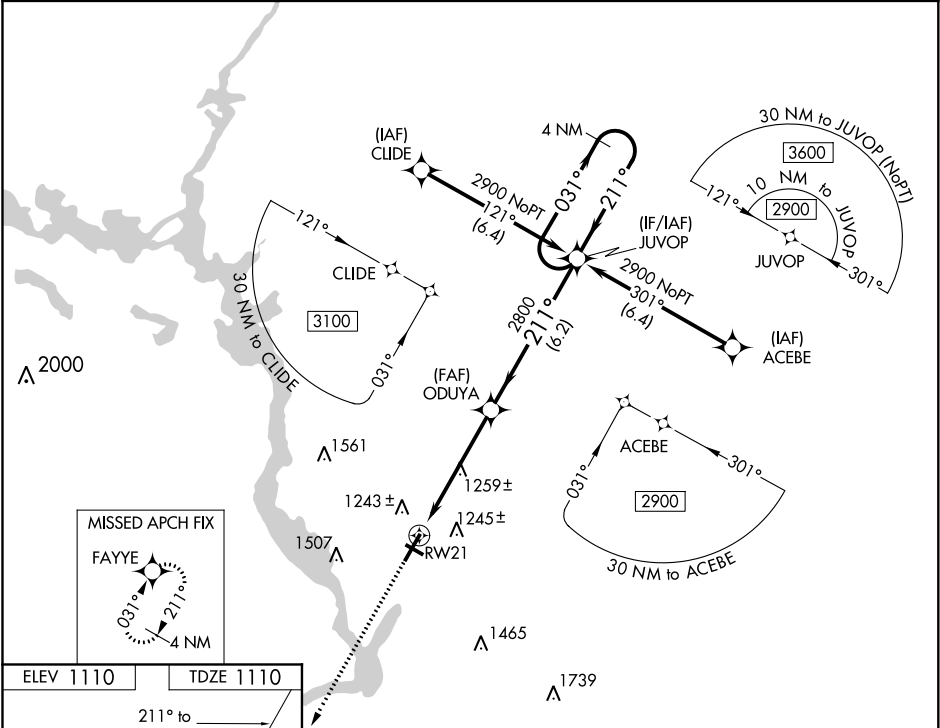
▲

For uncompensated Baro-VNAV systems, LNAV/VNAV NA below -17°C (2°F) or above 54°C (130°F). DME/DME RNP-0.3 NA. Inoperative table does not apply to LPV all Cats. For inoperative ALS, increase LNAV Cat C and D visibility to 1½ SM.

MALS

MISSED APPROACH:
Climb to 2800 direct
FAYYE and hold.

| | | |
|--------------------------|--|---------------------------------|
| AWOS-3 119.275 | MINNEAPOLIS CENTER 124.4 317.7 | UNICOM 122.7 (CTAF) 1 |
|--------------------------|--|---------------------------------|



REIL Rwy 3
 HIRL Rwys 3-21 and 12-30

| | | | | | | | | | | | |
|--|---|---|---|--|--|---|----------------------------------|---|---|---|---|
| <div> <div> <div>2800</div> <div>↑</div> </div> <div> <div>FAYYE</div> <div></div> </div> </div> | <div> <div>VGSI and RNAV glidepath not coincident</div> <div>(VGSI Angle 3.00°/TCH 37°).</div> </div> | <div> <div>4 NM</div> <div>Holding Pattern</div> </div> | <div> <div>JUVOP</div> <div>031° →</div> <div>← 211°</div> <div>2900</div> </div> | | | | | | | | |
| <div> <div>*LNAV only</div> <div></div> <div>RW21</div> </div> | <div> <div>ODUYA</div> <div>2800</div> <div>211°</div> <div>2800</div> </div> | <div> <div>*1.2 NM to RW21</div> <div>↓</div> </div> | <div> <div>GP 3.00°</div> <div>TCH 44</div> </div> | <div> <div>1.2 NM</div> <div>4 NM</div> <div>6.2 NM</div> </div> | <div> <div>CATEGORY</div> <div>A</div> <div>B</div> <div>C</div> <div>D</div> </div> | | | | | | |
| <div> <div>LPV</div> <div>DA</div> </div> | <div> <div>1360-¾</div> <div>250 (300-¾)</div> </div> | <div> <div>LNAV/VNAV</div> <div>DA</div> </div> | <div> <div>1457-⅞</div> <div>347 (400-⅞)</div> </div> | <div> <div>LNAV MDA</div> </div> | <div> <div>1520-¾</div> <div>410 (500-¾)</div> </div> | <div> <div>1520-1</div> <div>410 (500-1)</div> </div> | <div> <div>CIRCLING</div> </div> | <div> <div>1580-1</div> <div>470 (500-1)</div> </div> | <div> <div>1600-1</div> <div>490 (500-1)</div> </div> | <div> <div>1820-2</div> <div>710 (800-2)</div> </div> | <div> <div>1820-2¼</div> <div>710 (800-2¼)</div> </div> |
| <div> <div>1520-¾</div> <div>410 (500-¾)</div> </div> | <div> <div>1520-1</div> <div>410 (500-1)</div> </div> | <div> <div>1580-1</div> <div>470 (500-1)</div> </div> | <div> <div>1600-1</div> <div>490 (500-1)</div> </div> | <div> <div>1820-2</div> <div>710 (800-2)</div> </div> | <div> <div>1820-2¼</div> <div>710 (800-2¼)</div> </div> | | | | | | |