

APP CRS	Rwy Idg	3635
301°	TDZE	1108
	Apt Elev	1110

Rwy Idg	3635
TDZE	1108
Apt Elev	1110

IDZE	1108
Apt Elev	1110

Apt Elev **1110**RNAV (GPS) RWY 30
STEVENS POINT MUNI (STE)

STEVENSON POINT MUNI (STE)

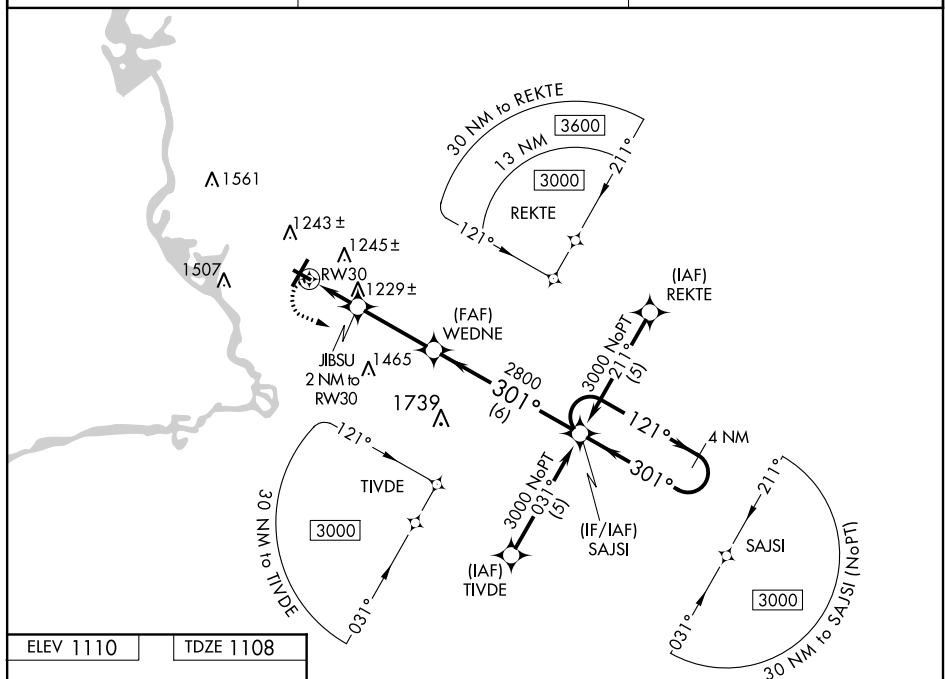
▼ DME/DME RNP-0.3 NA. Rwy 30 helicopter visibility reduction below $\frac{3}{4}$ SM NA.

▲ When local altimeter setting not received, use Mosinee altimeter setting and increase all MDA 60 feet, increase LNAV Cat D visibility $\frac{1}{4}$ mile and Circling Cat C and D visibility $\frac{1}{4}$ mile. VDP NA when using Mosinee altimeter setting.

MISSED APPROACH:
Climbing left turn to 3000
direct SAJSI and hold.

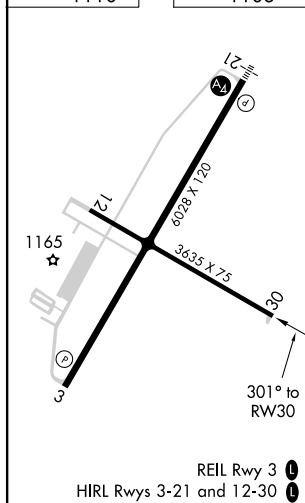
AWOS-3
119.275

MINNEAPOLIS CENTER
124.4 317.7

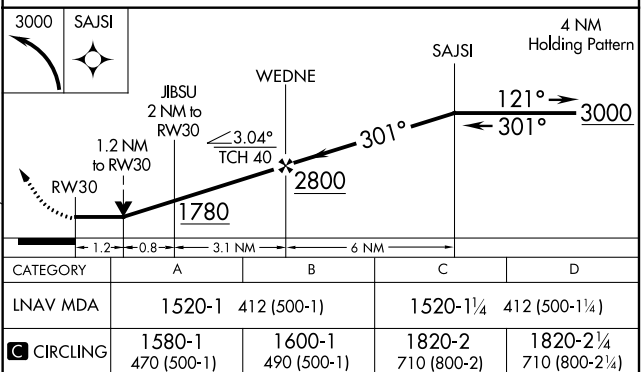
UNICOM
122.7 (CTAF) **L**

ELEV 1110

TDZE 1108

REIL Rwy 3 **L**

HIRL Rwy 3-21 and 12-30 **L**



STEVENS POINT, WISCONSIN

Orig-B 02JAN20

44°33'N - 89°32'W

STEVENS POINT MUNI (STE)

RNAV (GPS) RWY 30