

LOC/DME I-TXN

111.9

Chan 56

APP CRS

021°

Rwy Idg

8000

TDZE

867

Apt Elev

871

ILS or LOC RWY 2

CENTRAL IL RGNL ARPT AT BLOOMINGTON-NORMAL (BMI)

DME required for LOC only.

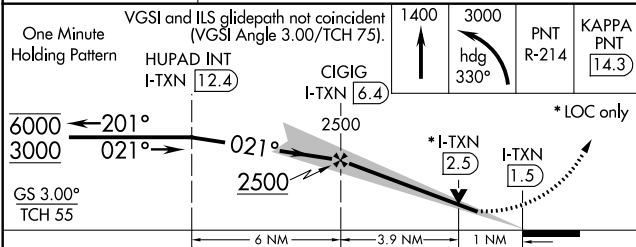
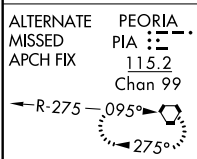
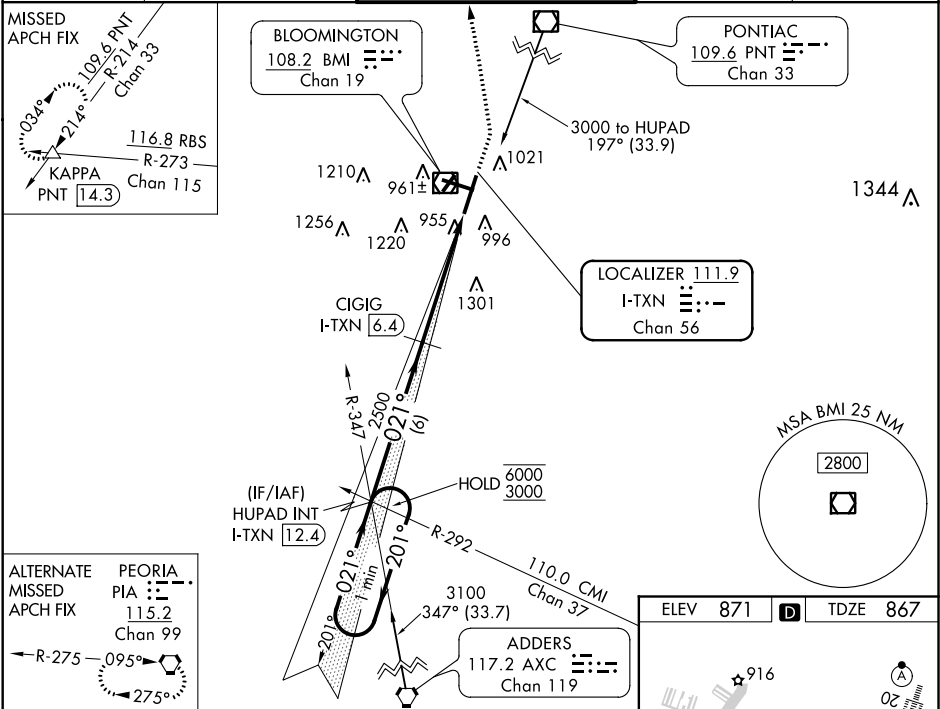
Autopilot coupled approach NA below 1100. VDP NA with General Downing-Peoria Intl altimeter setting. Inop table does not apply to S-ILS 2. For inop ALS, increase S-LOC 2 Cat A/B visibility to RVR 5500 and Cat C/D to RVR 6000. When local altimeter setting not received, use General Downing-Peoria Intl altimeter setting and increase all DA 116 feet and all MDA 120 feet, and S-LOC 2 Cat C/D visibility to RVR 5500. Circling Cat C/D visibility ¼ SM. For inop ALS when using General Downing-Peoria Intl altimeter setting, increase S-ILS 2 all Cats visibility to RVR 4500, S-LOC 2 Cat C/D visibility to 1 ¾ SM.

MALSR

MISSED APPROACH:

Climb to 1400 then climbing left turn to 3000 on heading 330° and on PNT VOR/DME R-214 to KAPPA INT/PNT 14.3 DME and hold.

ATIS	PEORIA APP CON	BLOOMINGTON TOWER ★	GND CON	UNICOM
135.35	128.725 256.9	124.6 (CTAF) 0 269.575	121.65	122.95



CATEGORY	A	B	C	D
S-ILS 2	1067/40	200 (200-¾)		
S-LOC 2	1260/40	393 (400-¾)		
CIRCLING	1340-1 469 (500-1)	1620-2¼ 749 (800-2¼)	1620-2½ 749 (800-2½)	

