

LOC/DME I-BMI	APP CRS	Rwy Idg	6525
110.95	111°	TDZE	871
Chan 46 (Y)		Apt Elev	871

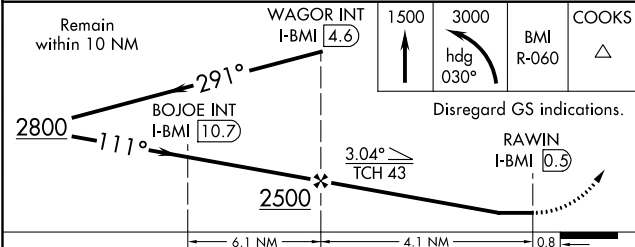
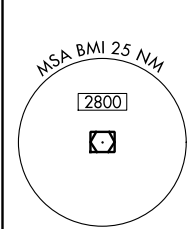
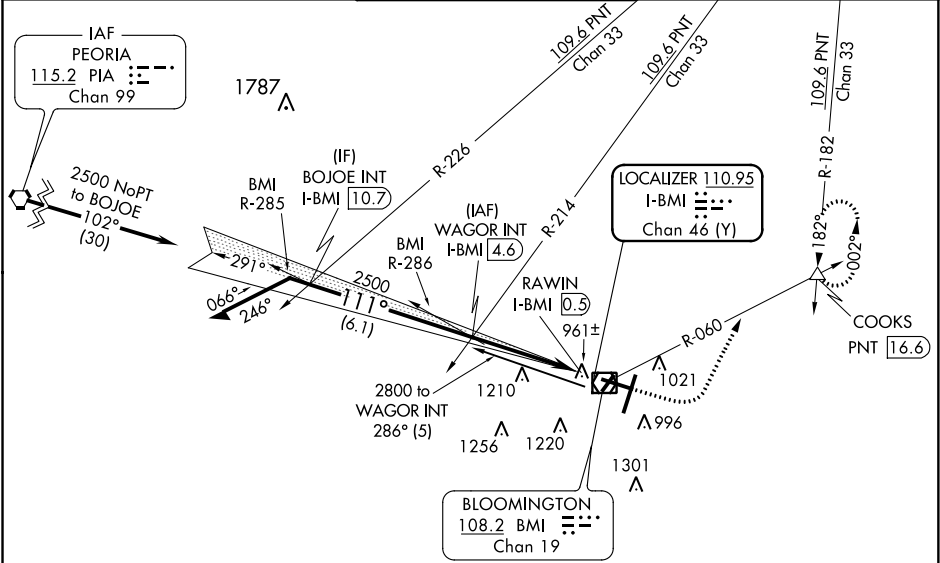
LOC BC RWY 11

CENTRAL IL RGNL ARPT AT BLOOMINGTON-NORMAL (BMI)

⚠ When local altimeter setting not received, use General Downing-Peoria
Intl altimeter setting: increase all MDA 120 feet, increase S-11 and
Circling Cats C/D visibility ¼ mile.

MISSED APPROACH: Climb to 1500 then
climbing left turn to 3000 on heading
030° and BMI VOR/DME R-060 to
COOKS INT/PNT 16.6 DME and hold.

ATIS 135.35	PEORIA APP CON 128.725 256.9	BLOOMINGTON TOWER★ 124.6 (CTAF) 0 269.575	GND CON 121.65	UNICOM 122.95
-----------------------	--	--	--------------------------	-------------------------



CATEGORY	A	B	C	D
S-11	1260-1 389 (400-1)		1260-1½ 389 (400-1½)	
CIRCLING	1340-1 469 (500-1)		1620-2¼ 749 (800-2¼)	1620-2½ 749 (800-2½)

