

WAAS  
CH **99303**  
W20A

APP CRS  
**201°**

Rwy Idg **8000**  
TDZE **871**  
Apt Elev **871**


RNAV (GPS) RWY 20

CENTRAL IL RGNL ARPT AT BLOOMINGTON-NORMAL (BMI)

⚠

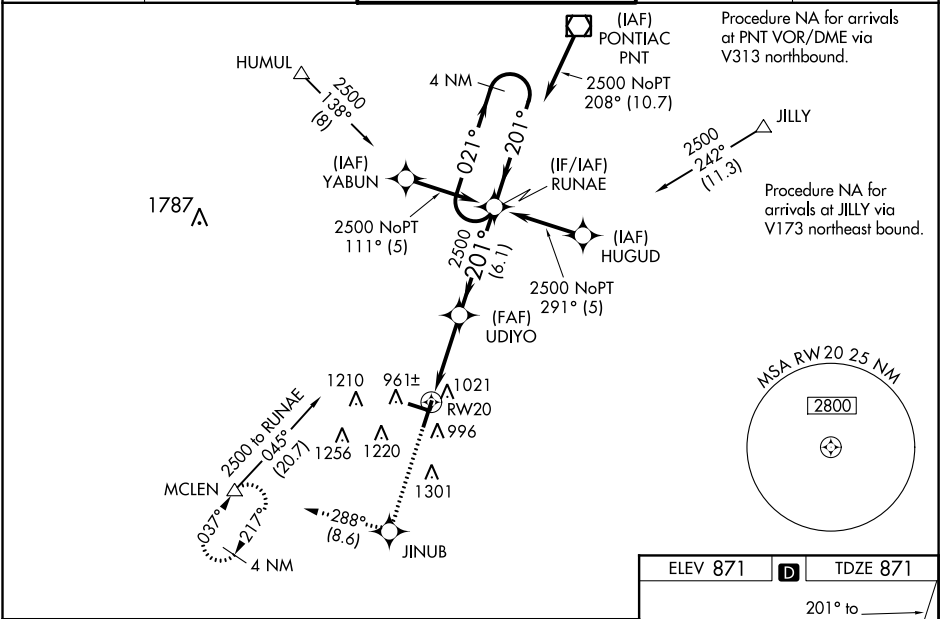
⚠

For uncompensated Baro-VNAV systems, LNAV/VNAV NA below -16°C (4°F) or above 54°C (130°F). DME/DME RNP-0.3 NA. Baro-VNAV and VDP NA when using General Downing-Peoria Intl altimeter setting. When local altimeter setting not received, use General Downing-Peoria Intl altimeter setting: increase all DA 116 feet and all MDA 120 feet; increase LPV all Cats visibility to ¾ mile, LNAV/VNAV all Cats visibility to 1 ¾ mile, LNAV Cats C/D visibility to 1 mile, and Circling Cats C/D visibility ¾ mile. For inop ALSF increase LNAV Cat C/D visibility to RVR 6000. For inoperative ALSF-2 when using General Downing-Peoria Intl altimeter setting increase LPV all Cats visibility to RVR 6000.

ALSF-2  


MISSED APPROACH:  
Climb to 3000 direct JINUB and on track 288° to MCLEN and hold.

ATIS <b>135.35</b>	PEORIA APP CON <b>128.725 256.9</b>	BLOOMINGTON TOWER ★ <b>124.6</b> (CTAF) <b>0 269.575</b>	GND CON <b>121.65</b>	UNICOM <b>122.95</b>
-----------------------	--	---	--------------------------	-------------------------



3000	JINUB	fr 288°	MCLEN	UDIYO	RUNAE	4 NM Holding Pattern
*LNAV only				2500	201°	021° → 2500
		*1.1 NM to RW20			2500	GP 3.00° TCH 55
		1.1	3.8 NM	6.1 NM		
CATEGORY	A	B	C	D		
LPV DA		1121/24	250 (300-½)			
LNAV/VNAV DA		1301/50	430 (500-1)			
LNAV MDA	1280/24	409 (500-½)	1280/40	409 (500-¾)		
CIRCLING	1340-1	469 (500-1)	1620-2¼ 749 (800-2¼)	1620-2½ 749 (800-2½)		

