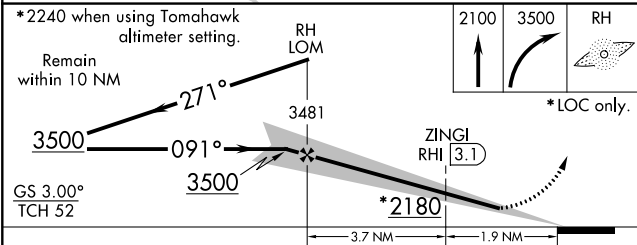
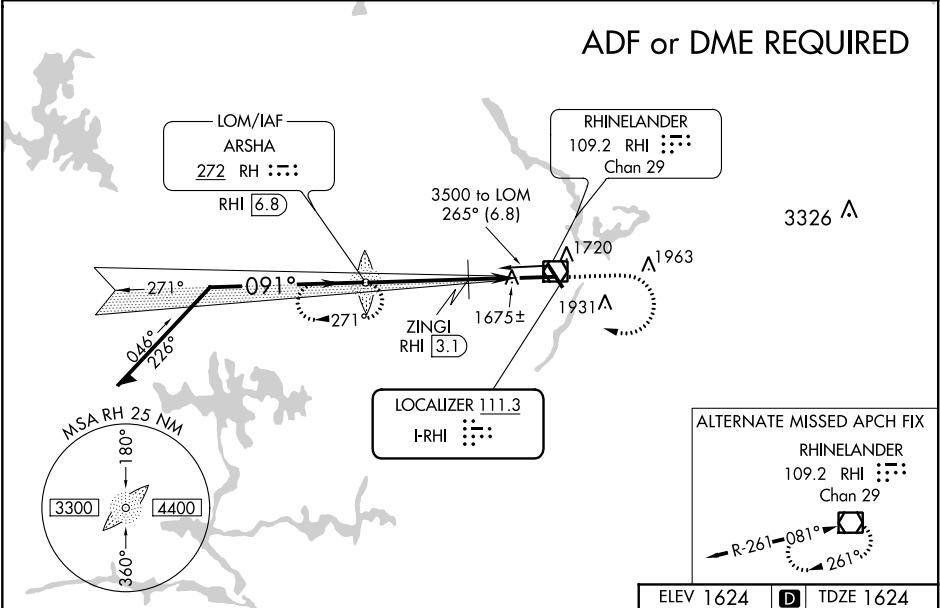


LOC I-RHI	APP CRS	Rwy Idg	6799
111.3	091°	TDZE	1624
		Apt Elev	1624


ILS or LOC RWY 9


RHINELANDER-ONEIDA COUNTY(RHI)

<div><div>ADF required. When local altimeter setting not received, use Tomahawk altimeter setting and increase DA 59 feet and MDA 60 feet, increase S-LOC 9 and Circling Cats C and D visibility ¼ mile, and increase ZINGI Fix Minimums S-LOC 9 and Circling Cats C and D visibility ¼ mile.</div><div>**DME from RHI VOR/DME.</div></div>	<div>MALSR</div> <div></div>	<div>MISSED APPROACH:</div> <div>Climb to 2100 then climbing right turn to 3500 direct ARSHA LOM/RHI 6.8 DME and hold.</div>
<div>ASOS</div> <div>126.825</div>	<div>MINNEAPOLIS CENTER</div> <div>133.65 281.5</div>	<div>UNICOM</div> <div>123.0 (CTAF) </div>



CATEGORY	A	B	C	D
S-ILS 9		1824-½	200 (200-½)	
S-LOC 9	2180-½ 556 (600-½)		2180-1 556 (600-1)	2180-1¼ 556 (600-1¼)
CIRCLING	2180-1 556 (600-1)	2220-1 596 (600-1)	2260-1¾ 636 (700-1¾)	2260-2 636 (700-2)
ZINGI FIX MINIMUMS**				
S-LOC 9	2020-½ 396 (400-½)		2020-¾ 396 (400-¾)	
CIRCLING	2060-1 436 (500-1)	2220-1 596 (600-1)	2260-1¾ 636 (700-1¾)	2260-2 636 (700-2)

HIRL Rwy 9-27 and 15-33 

REIL Rwy 15, 27 and 33 

FAF to MAP 5.6 NM

Knots	60	90	120	150	180
Min:Sec	5:36	3:44	2:48	2:14	1:52