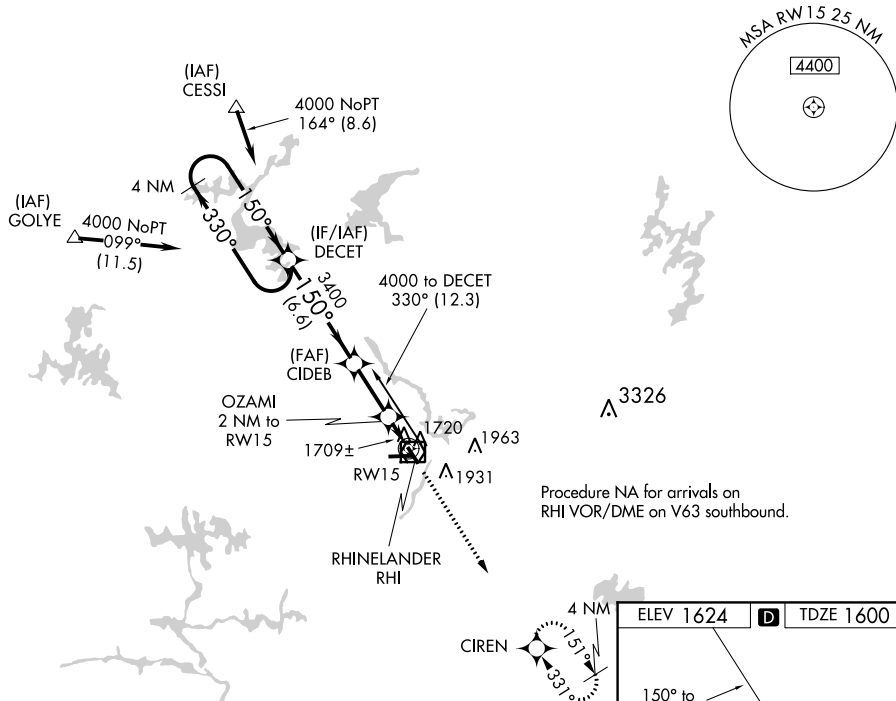


RNAV (GPS) RWY 15  
RHINELANDER-ONEIDA COUNTY (RHT)

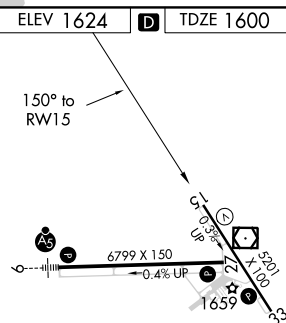
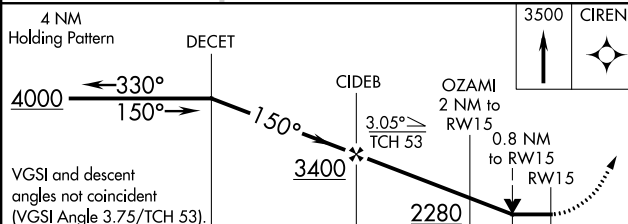
Helicopter visibility reduction below  $\frac{3}{4}$  SM NA. DME/DME RNP-0.3 NA. When local altimeter setting not received, use Tomahawk altimeter setting and increase all MDA 60 feet, increase LNAV and Circling visibility Cats C/D  $\frac{1}{4}$  mile.

**MISSED APPROACH:**  
Climb to 3500 direct  
CIREN and hold.

UNICOM  
123.0 (CTAF) **L**



### Procedure NA for arrivals on RHI VOR/DME on V63 southbound



| CATEGORY | A                     | B                     | C  | D  |
|----------|-----------------------|-----------------------|--|--|
| LNAY MDA | 1980-1 380 (400-1)    |                       |  | 1980-1 <sup>1</sup> / <sub>4</sub><br>380 (400-1 <sup>1</sup> / <sub>4</sub> ) |
| CIRCLING | 2060-1<br>436 (500-1) | 2220-1<br>596 (600-1) | 2260-1 <sup>3</sup> / <sub>4</sub><br>636 (700-1 <sup>3</sup> / <sub>4</sub> ) | 2260-2<br>636 (700-2)  |

HIRL Rwy 9-27 and 15-33 **L**  
REIL Rwy 15, 27 and 33 **L**