

WAAS CH 69407 W33A	APP CRS 330°	Rwy Idg TDZE 1611 Apt Elev 1624
--	------------------------	---

RNAV (GPS) RWY 33

RHINELANDER-ONEIDA COUNTY(RHI)

▽

⚠

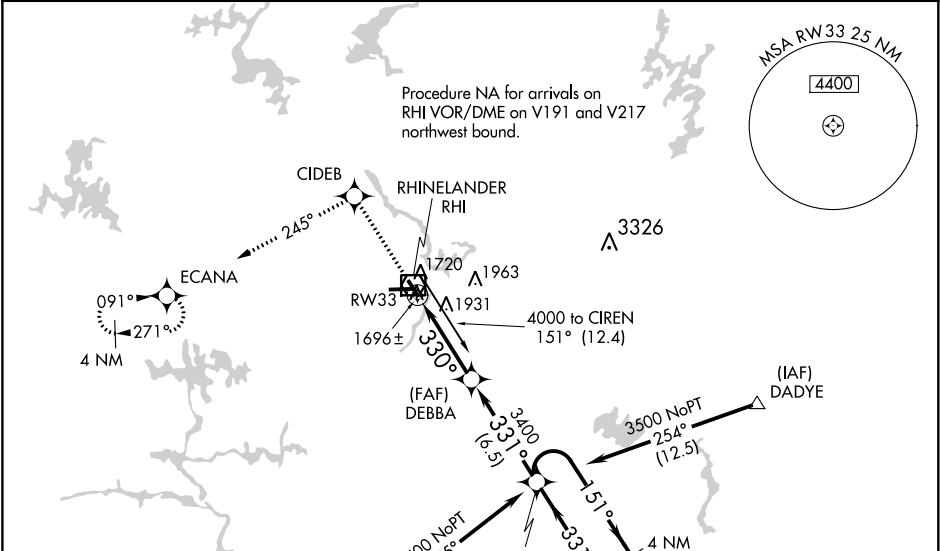
❄

-31°C

Baro-VNAV NA when using Tomahawk altimeter setting. For uncompensated Baro-VNAV systems, LNAV/VNAV NA below -18°C (0°F) or above 45°C (113°F). Helicopter visibility reduction below ¾ SM NA. DME/DME RNP-0.3 NA. When local altimeter setting not received, use Tomahawk altimeter setting and increase all DA and MDA 60 feet, increase visibility LNAV/VNAV all Cats ¼, LNAV Cat D and Circling Cats C/D ¼ mile.

MISSED APPROACH:
Climb to 4000 direct CIDEB and on track 245° to ECANA and hold.

ASOS 126.825	MINNEAPOLIS CENTER 133.65 281.5	UNICOM 123.0 (CTAF) 📶
------------------------	---	--



ELEV 1624	D	TDZE 1611
-----------	----------	-----------

4000

CIDEB

tr 245°

ECANA

CIREN

4 NM Holding Pattern

* LNAV only.

* 1.5 NM to RW33

RW33

DEBBA

3400

330°

331°

3500

151°

331°

GP 3.00° TCH 50

VGSI and RNAV glidepath not coincident (VGSI Angle 3.00/TCH 25).

1.5

3.9 NM

6.5 NM

CATEGORY	A	B	C	D
LPV DA	1862-1		250 (300-1)	
LNAV/VNAV DA	2257-2 ¼		645 (700-2 ¼)	
LNAV MDA	2120-1 508 (500-1)		2120-1 ½ 508 (500-1 ½)	
CIRCLING	2120-1 496 (500-1)	2220-1 596 (600-1)	2260-1 ¾ 636 (700-1 ¾)	2260-2 636 (700-2)

HIRL Rwy 9-27 and 15-33

REIL Rwy 15, 27 and 33