

WAAS CH 97715 W09A	APP CRS 091°	Rwy Idg TDZE 1624 Apt Elev 1624	6799
----------------------------------------	------------------------	-----------------------------------------------------	-------------

RNAV (GPS) RWY 9

RHINELANDER-ONEIDA COUNTY (RHI)

▼

▲

❄

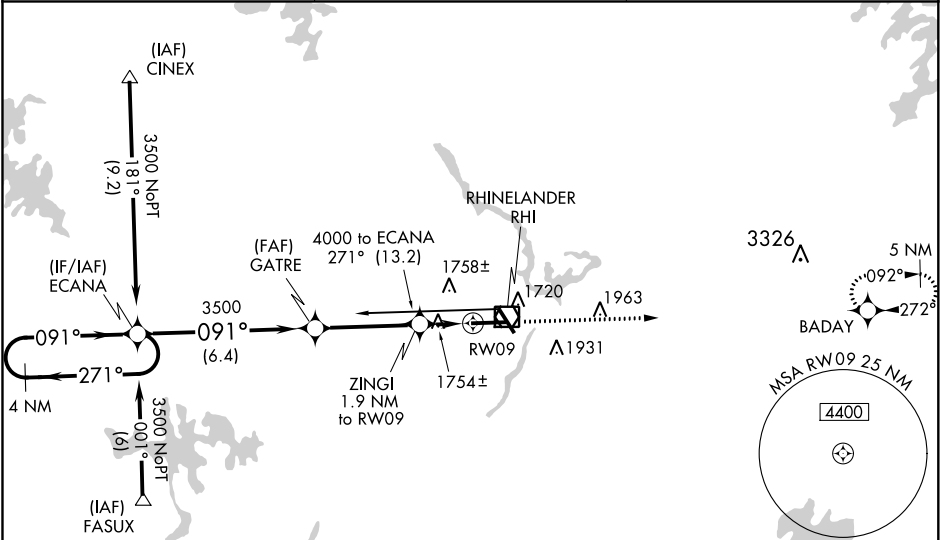
-31°C

Baro-VNAV NA when using Tomahawk altimeter setting. For uncompensated Baro-VNAV systems, LNAV/VNAV NA below -18°C (0°F) or above 45°C (113°F). DME/DME RNP-0.3 NA. When local altimeter setting not received, use Tomahawk altimeter setting: increase LPV all Cats DA to 1883 feet, LNAV/VNAV all Cats DA to 2109 feet and LNAV/VNAV all Cats visibility 1/8 mile; increase all MDA 60 feet and LNAV Cat C/D and Circling Cat C/D visibilities 1/4 mile. For inop MALSR, increase LNAV/VNAV all Cats visibility to 1 1/8 mile. VDP NA when using Tomahawk altimeter setting.

MALSR

MISSED APPROACH:
Climb to 4500 direct
BADAY and hold.

ASOS 126.825	MINNEAPOLIS CENTER 133.65 281.5	UNICOM 123.0 (CTAF) 1
------------------------	-------------------------------------------	---------------------------------



ELEV 1624

TDZE 1624

4 NM Holding Pattern

GP 3.00°
TCH 52

CATEGORY	A	B	C	D
LPV DA	1824-1/2		200 (200-1/2)	
LNAV/VNAV DA	2050-1		426 (500-1)	
LNAV MDA	2020-1/2	396 (400-1/2)	2020-5/8	396 (400-5/8)
CIRCLING	2060-1 436 (500-1)	2220-1 596 (600-1)	2260-1 3/4 636 (700-1 3/4)	2260-2 636 (700-2)

HIRL Rwy 9-27 and 15-33

REIL Rwy 15, 27 and 33