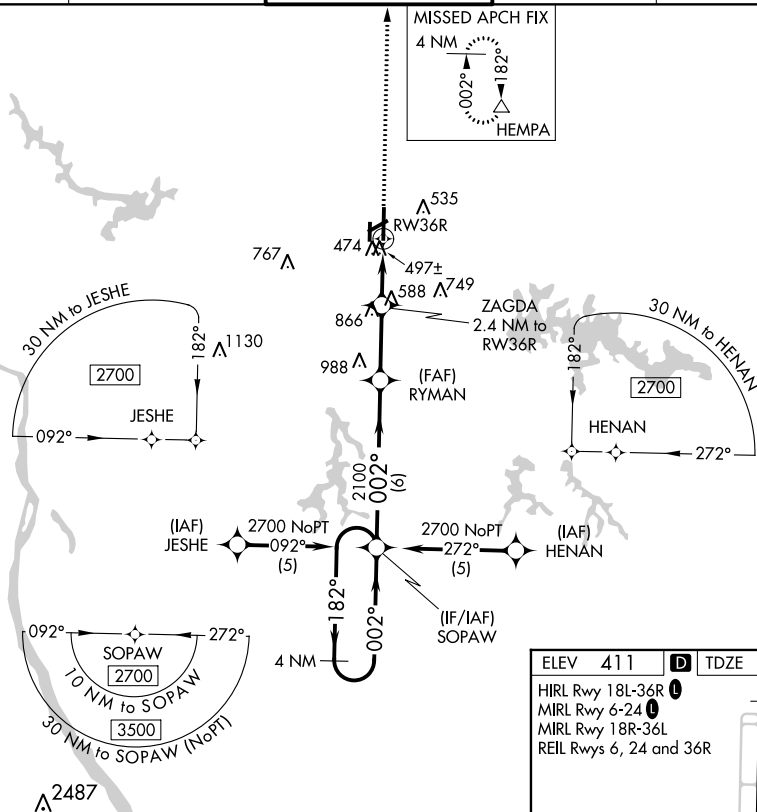
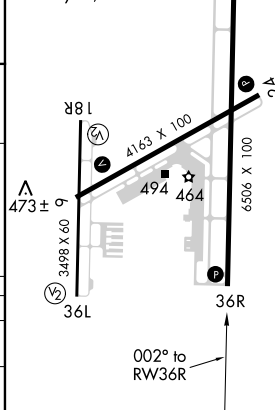


RNAV (GPS) RWY 36R
SOUTHERN ILLINOIS (MDH)

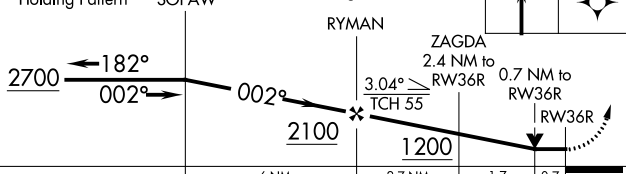
MISSED APPROACH:
Climb to 2700 direct
HEMPA and hold.

UNICOM
122.95

ELEV 411	D	TDZE 407
HIRL Rwy 18L-36R L		
MIRL Rwy 6-24 L		
MIRL Rwy 18R-36L		
REIL Rwy 6, 24 and 36R		



4 NM Holding Pattern	VGSI and descent angles not coincident (VGSI Angle 4.00/TCH 69).	2700	HEMPA
-------------------------	---	------	-------



CATEGORY	A	B	C	D
LNAV MDA	760-1 353 (400-1)			760-1¼ 353 (400-¼)
CIRCLING	900-1 489 (500-1)		900-1½ 489 (500-1½)	980-2 569 (600-2)

EC-3, 31 DEC 2020 to 28 JAN 2021