

WAAS  
CH **45522**  
**W09A**

APP CRS  
**090°**

Rwy Idg  
TDZE **707**  
Apt Elev **712**

RNAP APCH.

For uncompensated Baro-VNAV systems, LNAV/VNAV NA below -20°C or above 54°C.  
For inop ALS, increase LNAV Cat C/D visibility to 1½ SM.

RNAP APCH.

For uncompensated Baro-VNAV systems, LNAV/VNAV NA below -20°C or above 54°C.  
For inop ALS, increase LNAV Cat C/D visibility to 1½ SM.

MALSR

MISSED APPROACH:

Climb to 2500 direct HOGIE and hold.

ATIS  
**125.85**

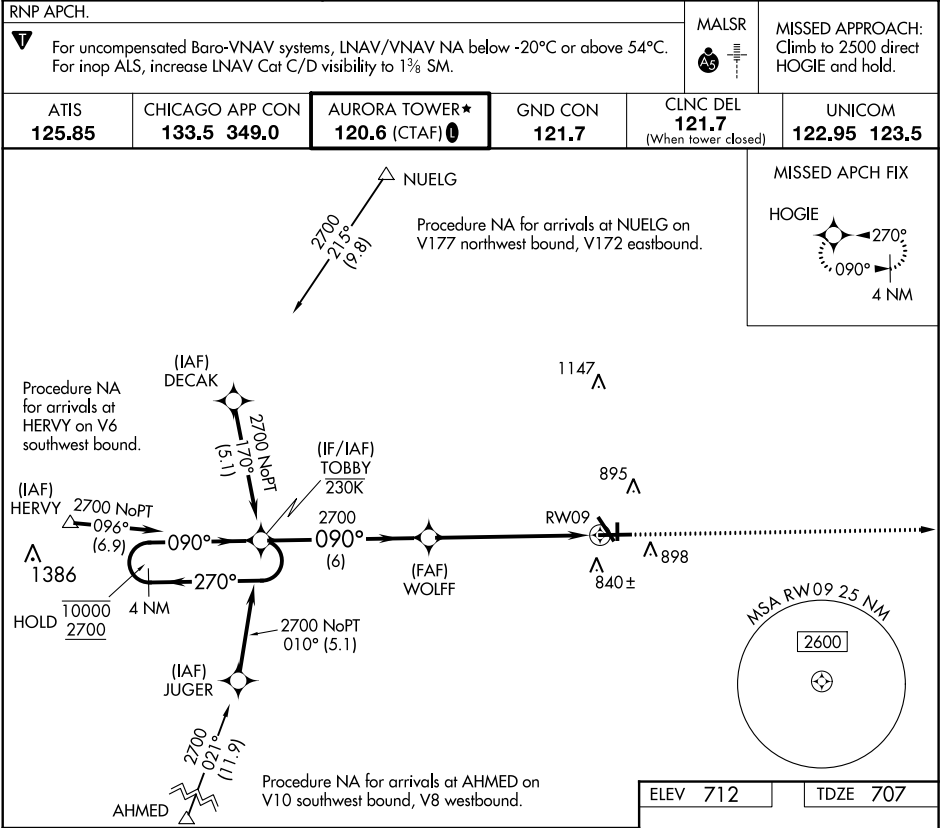
CHICAGO APP CON  
**133.5 349.0**

AURORA TOWER★  
**120.6** (CTAF) **0**

GND CON  
**121.7**

CLNC DEL  
**121.7**  
(When tower closed)

UNICOM  
**122.95 123.5**



4 NM Holding Pattern		TOBBY		WOLFF		2500 HOGIE	
10000 2700		←270° 090°→		090°		*LNAV only.	
GP 3.00° TCH 45		2700		*1.5 NM to RW09		RW09	
6 NM		4.6 NM		1.5 NM			
CATEGORY	A	B	C	D			
LPV DA	957-½		250 (300-½)				
LNAV/VNAV DA	1035-½		328 (400-½)				
LNAV MDA	1220-½ 513 (600-½)		1220-1 513 (600-1)				
CIRCLING	1220-1 508 (600-1)		1220-1½ 508 (600-1½)		1320-2 608 (700-2)		

ELEV 712

TDZE 707

090° to RW09

MIRL Rwy 18-36

HIRL Rwy 15-33 and 9-27

REIL Rwy 15, 18, 27, and 36