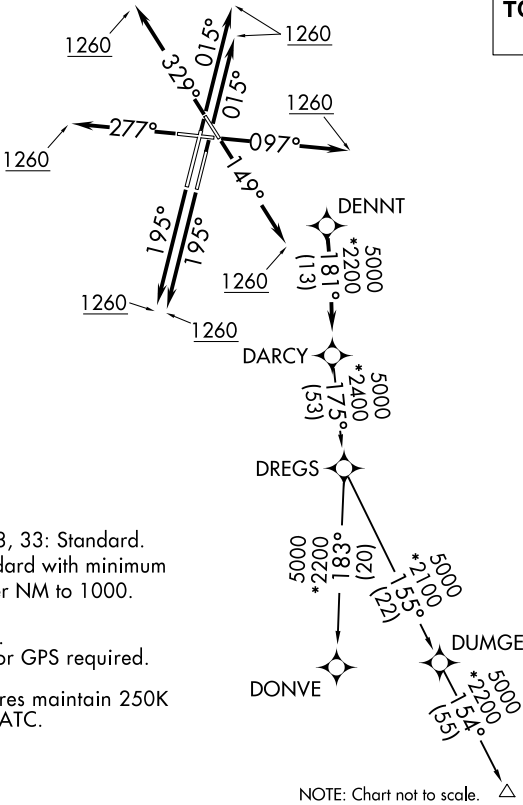


ATIS  
132.075  
GND CON  
121.8  
DUPAGE TOWER  
120.9 257.8  
CHICAGO DEP CON  
133.5 349.0

TOP ALTITUDE:  
3000



TAKEOFF MINIMUMS:

Rwys 2L/R, 10, 20L/R, 28, 33: Standard.  
Rwy 15: 300-1<sup>3</sup>/<sub>8</sub> or standard with minimum  
climb of 205' per NM to 1000.

- NOTE: RADAR required.  
NOTE: DME/DME/IRU or GPS required.  
NOTE: RNAV 1.  
NOTE: Turbojet departures maintain 250K  
until advised by ATC.

NOTE: Chart not to scale. △ SCOTO

DEPARTURE ROUTE DESCRIPTION

- TAKEOFF RUNWAYS 2L/R: Climb heading 015° to 1260, then as assigned by ATC, for vectors to DENNT. Thence . . . .
- TAKEOFF RUNWAY 10: Climb heading 097° to 1260, then as assigned by ATC, for vectors to DENNT. Thence . . . .
- TAKEOFF RUNWAY 15: Climb heading 149° to 1260, then as assigned by ATC, for vectors to DENNT. Thence . . . .
- TAKEOFF RUNWAYS 20L/R: Climb heading 195° to 1260, then as assigned by ATC, for vectors to DENNT. Thence . . . .
- TAKEOFF RUNWAY 28: Climb heading 277° to 1260, then as assigned by ATC, for vectors to DENNT. Thence . . . .
- TAKEOFF RUNWAY 33: Climb heading 329° to 1260, then as assigned by ATC, for vectors to DENNT. Thence . . . .

. . . . on track 181° to DARCY, then on (transition). Maintain 3000.  
Expect filed altitude 10 minutes after departure.

- DONVE TRANSITION (DARCY6.DONVE):  
SCOTO TRANSITION (DARCY6.SCOTO):

EC-3, 31 DEC 2020 to 28 JAN 2021

EC-3, 31 DEC 2020 to 28 JAN 2021