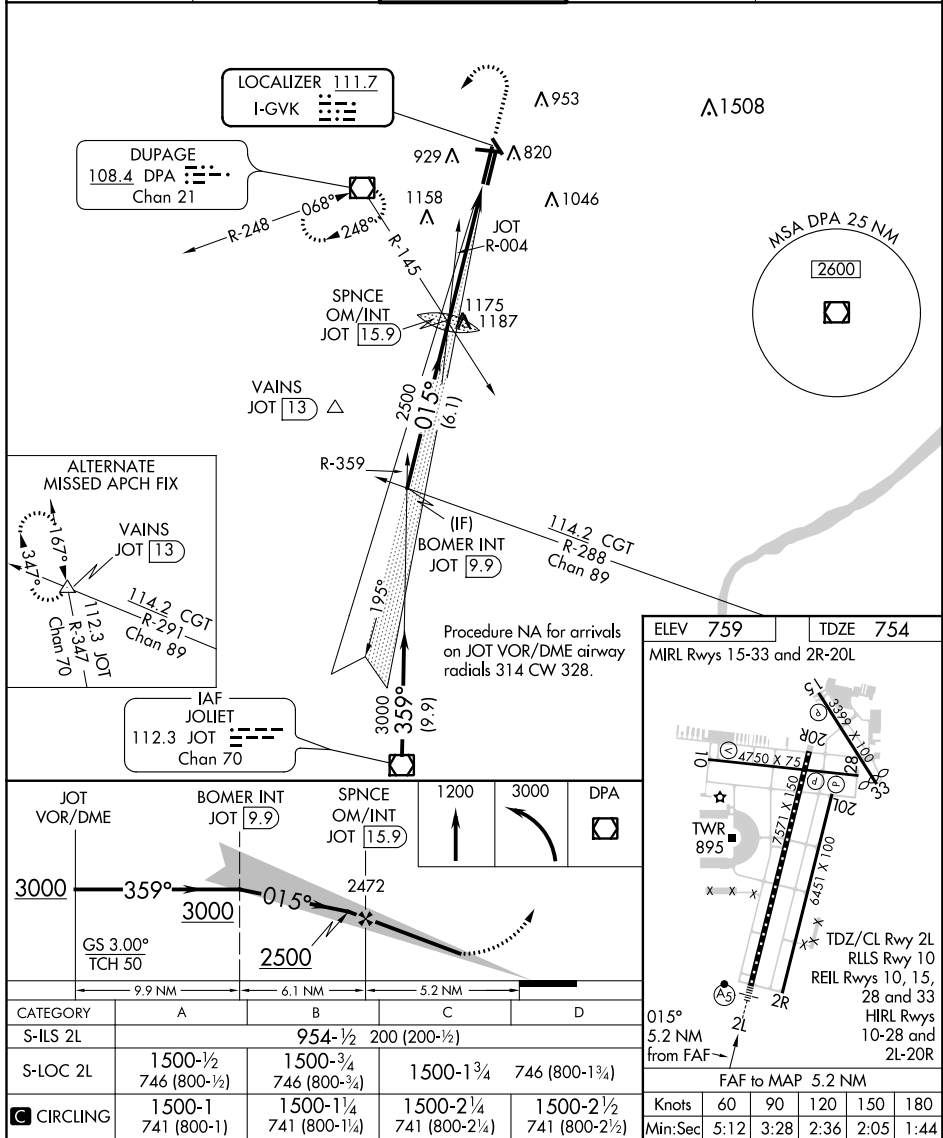


ILS or LOC RWY 2L  
DUPAGE (DPA)

MALSR

**MISSED APPROACH:** Climb to 1 200 then climbing left turn to 3000 direct DPA VOR/DME and hold, continue climb-in-hold to 3000.

ATIS <b>132.075</b>	CHICAGO APP CON <b>133.5 349.0</b>	DUPAGE TOWER <b>120.9 257.8</b>	GND CON <b>121.8</b>	CLNC DEL <b>119.75</b>
------------------------	---------------------------------------	------------------------------------	-------------------------	---------------------------



EC-3, 31 DEC 2020 to 28 JAN 2021

EC-3, 31 DEC 2020 to 28 JAN 2021