

WAAS CH 53618 W10A	APP CRS 097°	Rwy Idg 4750 TDZE 756 Apt Elev 759
--	------------------------	---

RNAV (GPS) RWY 10

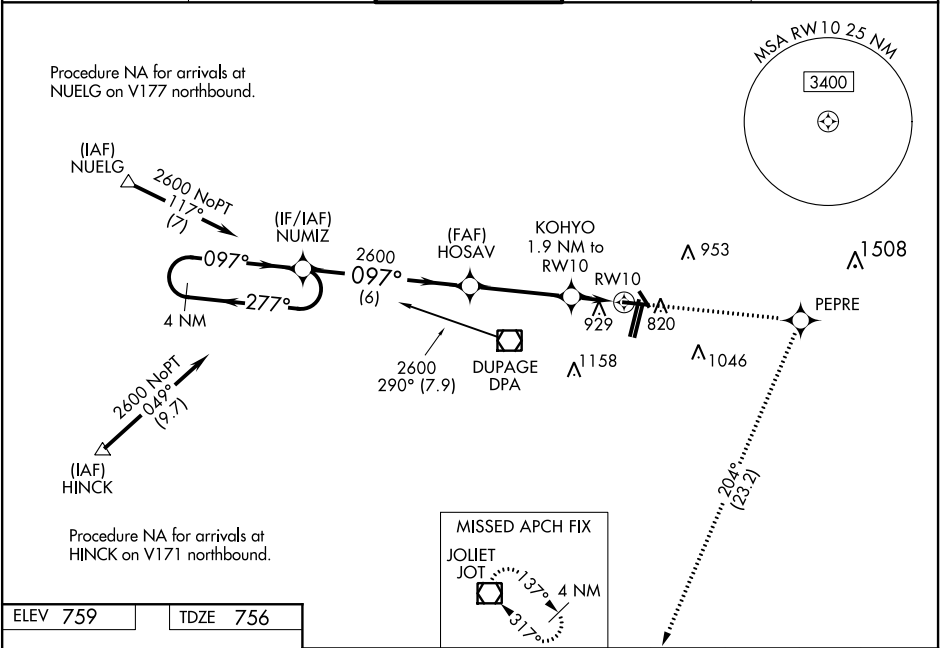
DUPAGE (DPA)

⚠

For uncompensated Baro-VNAV systems, LNAV/VNAV NA below -16°C (4°F) or above 54°C (130°F). DME/DME RNP-0.3 NA. When local altimeter setting not received, use Aurora altimeter setting and increase all DA 37 feet and all MDA 40 feet, increase LNAV Cat D visibility ¼ mile. VDP and Baro-VNAV NA when using Aurora altimeter setting. Circling Rwy 15, 28, 33 NA at night.

MISSED APPROACH: Climb to 2600 direct PEPRE and right turn on track 204° to JOT VOR/DME and hold.

ATIS 132.075	CHICAGO APP CON 133.5 349.0	DUPAGE TOWER 120.9 257.8	GND CON 121.8	CLNC DEL 119.75
------------------------	---------------------------------------	------------------------------------	-------------------------	---------------------------



4 NM Holding Pattern		2600	PEPRE	JOT
		↑	✧	↪ tr 204°
		*LNAV only		
NUMIZ		HOSAV	KOHYO 1.9 NM to RW10	
2600		2600	*1.2 NM to RW10	
GP 3.00° TCH 50		2600	RW10	
← 277°		→ 097°	↘	
← 2600		← 2600	← 2600	
← 6 NM		← 3.7 NM	← 0.7	← 1.2 NM
CATEGORY	A	B	C	D
LPV DA	956-¾ 200 (200-¾)			
LNAV/VNAV DA	1244-1¾ 488 (500-1¾)			
LNAV MDA	1180-1 424 (500-1)		1180-1¼ 424 (500-1¼)	
CIRCLING	1260-1 501 (600-1)		1360-1¾ 601 (700-1¾)	
			1360-2 601 (700-2)	