

|  |                        |   |
|--|------------------------|---|
| WAAS<br>CH <b>86830</b><br><b>W02B</b> | APP CRS<br><b>015°</b> | Rwy Idg <b>7571</b><br>TDZE <b>754</b><br>Apt Elev <b>759</b> |
|--|------------------------|---|

RNAV (GPS) RWY 2L

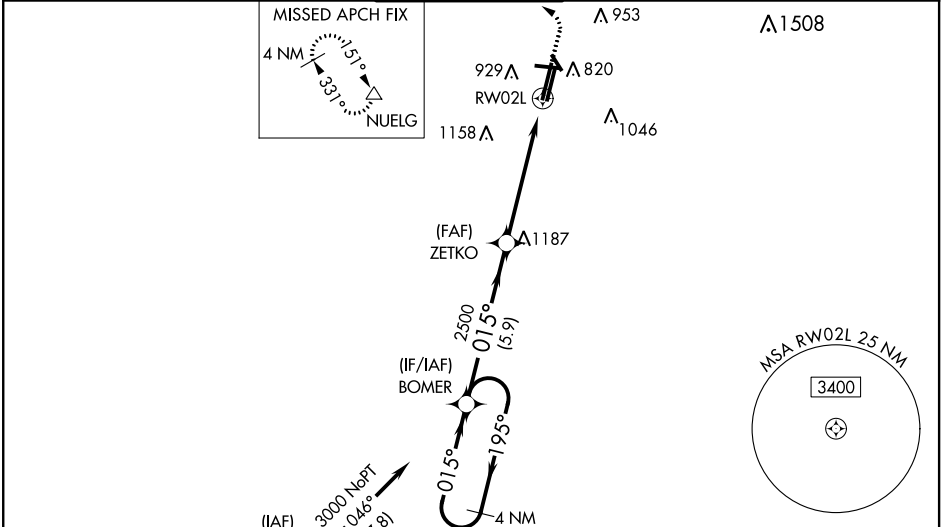
DUPAGE (DPA)

**⚠** For uncompensated Baro-VNAV systems, LNAV/VNAV NA below -16°C (4°F) or above 54°C (130°F). DME/DME RNP-0.3 NA. When local altimeter setting not received, use Aurora altimeter setting and increase all DA 37 feet and all MDA 40 feet; increase LNAV/VNAV all Cats and LNAV Cat C/D visibility ½ mile. For inop MALS, increase LNAV/VNAV all Cats visibility to 1½ and LNAV Cat C/D visibility to 1½ mile. For inop MALS when using Aurora altimeter setting, increase LNAV/VNAV all Cats visibility to 1½ and LNAV Cat C/D visibility to 1½ mile. VDP and Baro-VNAV NA when using Aurora altimeter setting. Circling Rwy 15, 28, 33 NA at night.

MALS

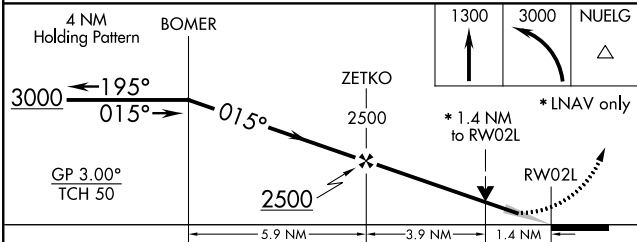
**MISSED APPROACH:**  
Climb to 1300 then climbing left turn to 3000 direct NUEL and hold.

|                        |                                       |                                    |                         |                           |
|------------------------|---------------------------------------|------------------------------------|-------------------------|---------------------------|
| ATIS<br><b>132.075</b> | CHICAGO APP CON<br><b>133.5 349.0</b> | DUPAGE TOWER<br><b>120.9 257.8</b> | GND CON<br><b>121.8</b> | CLNC DEL<br><b>119.75</b> |
|------------------------|---------------------------------------|------------------------------------|-------------------------|---------------------------|



ELEV **759**      TDZE **754**

MIRL Rwy 15-33 and 2R-20L  
TDZ/CL Rwy 2L  
RLS Rwy 10



| CATEGORY     | A       | B            | C                       | D                     |
|--------------|---------|--------------|-------------------------|-----------------------|
| LPV DA       |         | 954- ½       | 200 (200- ½)            |                       |
| LNAV/VNAV DA |         | 1114- ¾      | 360 (400- ¾)            |                       |
| LNAV MDA     | 1260- ½ | 506 (600- ½) | 1260-1                  | 506 (600-1)           |
| CIRCLING     | 1260-1  | 501 (600-1)  | 1360-1¾<br>601 (700-1¾) | 1360-2<br>601 (700-2) |

EC-3, 31 DEC 2020 to 28 JAN 2021

EC-3, 31 DEC 2020 to 28 JAN 2021