

LOC I-DNV <b><u>108.5</u></b>	APP CRS <b>209°</b>	Rwy Idg TDZE Apt Elev	<b>6006</b> <b>697</b> <b>697</b>
----------------------------------	------------------------	-----------------------------	---

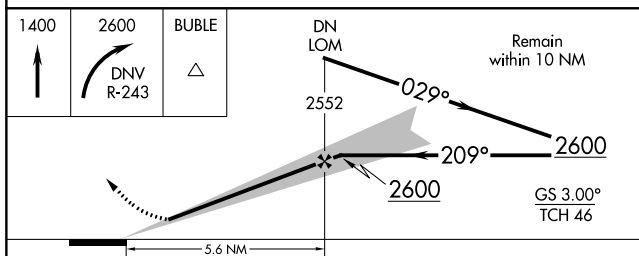
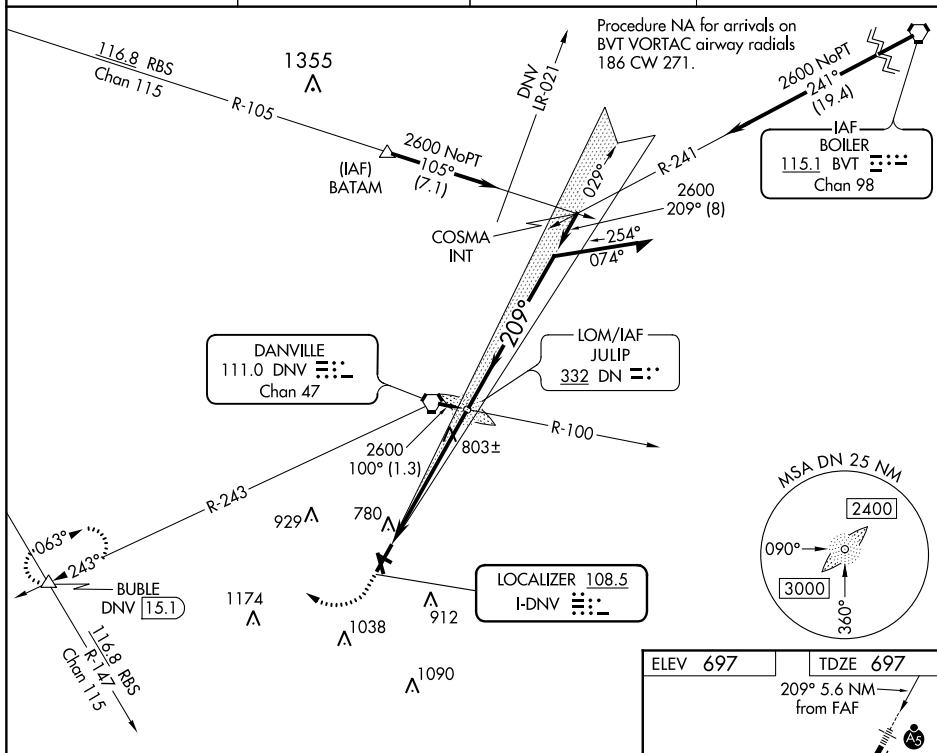
ILS or LOC RWY 21  
VERMILION RGNL (DNV)

**T** If local altimeter not received, use University of Illinois-  
**A** Willard altimeter setting, and increase all DAs/MDAs  
100 feet.

MALSR

**MISSED APPROACH:** Climb to 1400, then climbing right turn to 2600 via DNV R-243 to BUBLE INT and hold.

AWOS-3 <b>119.275</b>	CHAMPAIGN APP CON ★ <b>121.35 285.65</b>	CLNC DEL <b>121.7</b>	UNICOM <b>122.7 (CTAF) ①</b>
--------------------------	---	--------------------------	---------------------------------



CATEGORY	A	B	C	D
S-ILS 21	897- $\frac{1}{2}$ 200 (200- $\frac{1}{2}$ )			
S-LOC 21	1080- $\frac{1}{2}$ 383 (400- $\frac{1}{2}$ )			1080- $\frac{3}{4}$ 383 (400- $\frac{3}{4}$ )
CIRCLING	1160-1 463 (500-1)		1160- $\frac{1}{2}$ 463 (500- $\frac{1}{2}$ )	1260-2 563 (600-2)

