

WAAS CH <b>58004</b> <b>W21A</b>	APP CRS <b>210°</b>	Rwy Idg <b>6006</b> TDZE <b>697</b> Apt Elev <b>697</b>
--	------------------------	---

RNAV (GPS) RWY 21  
VERMILION RGNL (DNV)

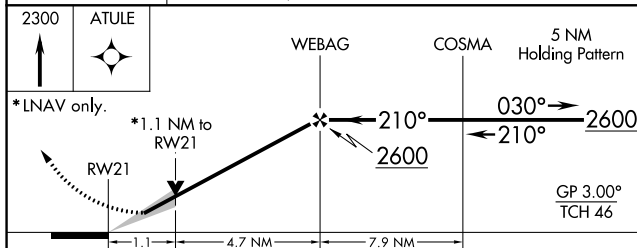
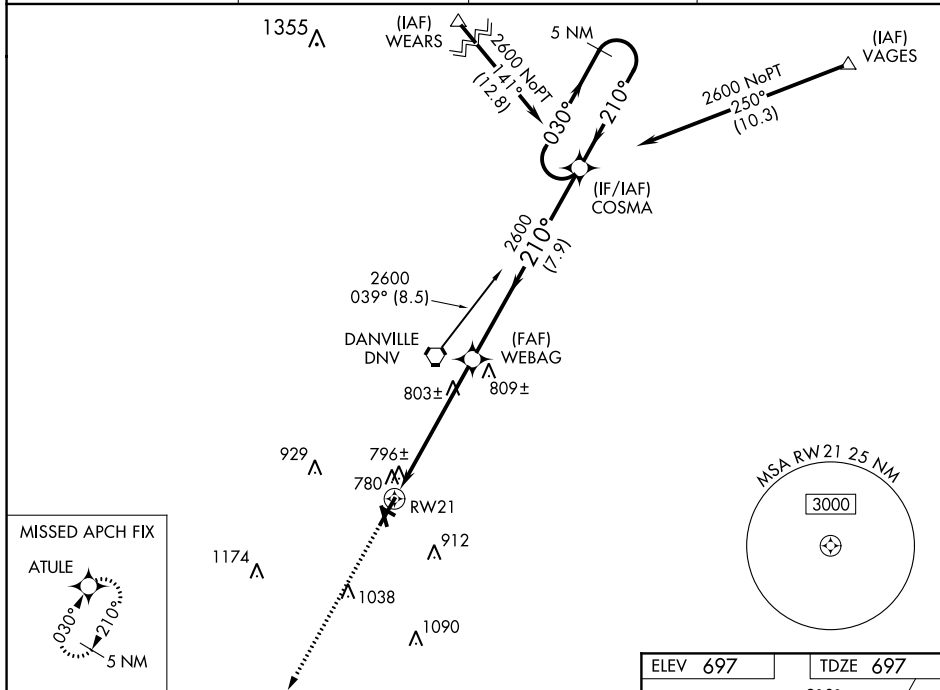
**▼** If local altimeter setting not received, use University of Illinois-Willard altimeter setting and increase all DAs/MDAs 100 feet. Baro-VNAV and VDP NA when using University of Illinois-Willard altimeter setting. For uncompensated Baro-VNAV systems, LNAV/VNAV NA below -16°C (4°F) or above 47°C (116°F). For inop MALSR, increase LPV alt Cats visibility to 1 mile and LNAV Cat D visibility to 1/4 mile. DME/DME RNP 0.3 NA.

MALSR



**MISSED APPROACH:** Climb to 2300 direct ATULE and hold.

AWOS-3 <b>119.275</b>	CHAMPAIGN APP CON ★ <b>121.35 285.65</b>	CLNC DEL <b>121.7</b>	UNICOM <b>122.7 (CTAF) 0</b>
--------------------------	---	--------------------------	---------------------------------



CATEGORY		A	B	C	D
LPV	DA	990-1/2		293 (300-1/2)	
LNNAV/ VNAV	DA	1069-3/4		372 (400-3/4)	
LNNAV	MDA	1080-1/2 383 (400-1/2)			1080-1 383 (400-1)
CIRCLING		1160-1 463 (500-1)		1160-1 1/2 463 (500-1 1/2)	1260-2 563 (600-2)

