

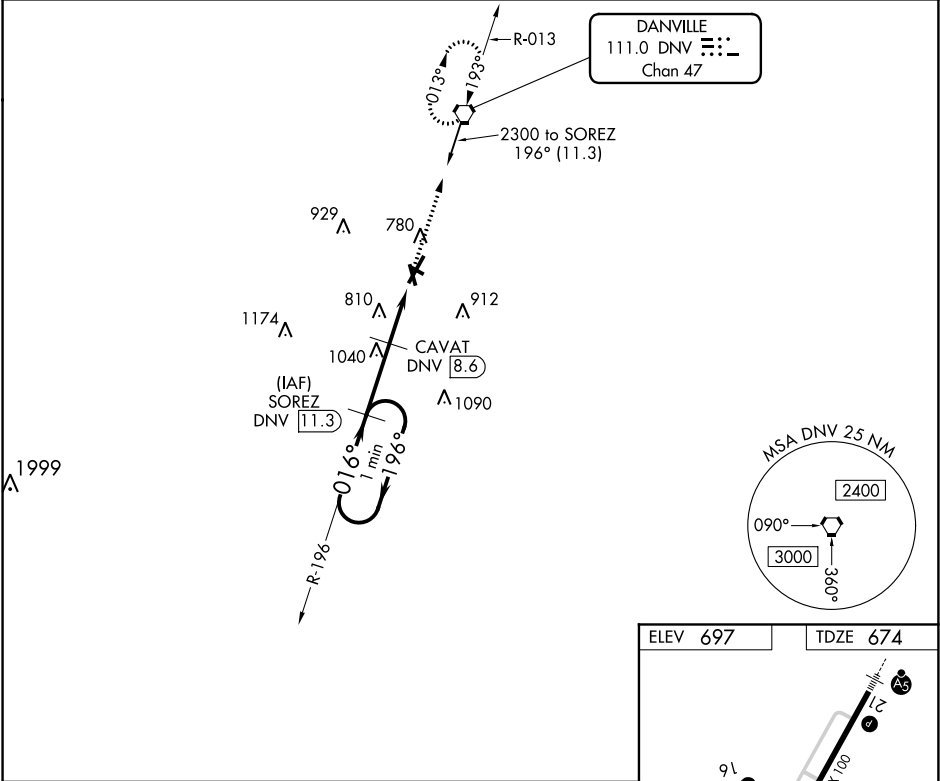
VORTAC DNV 111.0 Chan 47	APP CRS 016°	Rwy Idg 6006 TDZE 674 Apt Elev 697
--	------------------------	---

VOR/DME RWY 3
VERMILION RGNL (DNV)

⚠ If local altimeter setting not received, use University of Illinois-Willard altimeter setting and increase all MDAs 100 feet. Helicopter visibility reduction below ¼ SM NA.

MISSED APPROACH: Climb to 2300 direct DNV VORTAC and hold.

AWOS-3 119.275	CHAMPAIGN APP CON ★ 121.35 285.65	CLNC DEL 121.7	UNICOM 122.7 (CTAF) 📻
--------------------------	---	--------------------------	--



One Minute Holding Pattern

2300 ← 196° 016° →

SOREZ DNV 11.3

CAVAT DNV 8.6

2300 DNV

1440

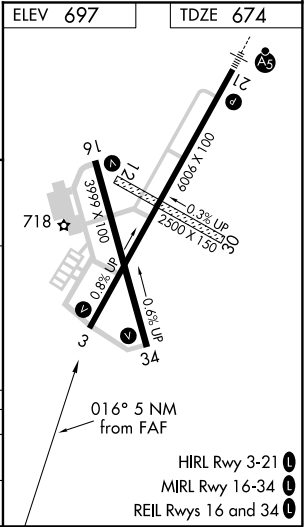
3.07° TCH 41

2.7 NM

2.3 NM

DNV 6.3

CATEGORY	A	B	C	D
S-3	1120-1	446 (500-1)	1120-1¼ 446 (500-1¼)	1120-1½ 446 (500-1½)
CIRCLING	1160-1	463 (500-1)	1160-1½ 463 (500-1½)	1260-2 563 (600-2)



EC-3, 31 DEC 2020 to 28 JAN 2021

EC-3, 31 DEC 2020 to 28 JAN 2021