

APP CRS	Rwy Idg	4422
315°	TDZE	667
	Apt Elev	674

RNAV (GPS) RWY 32

BATTEN INTL (RAC)

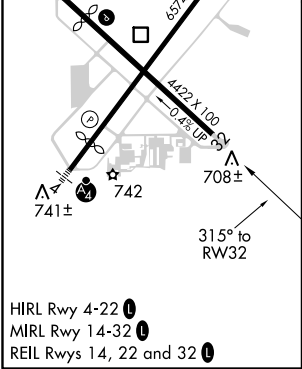
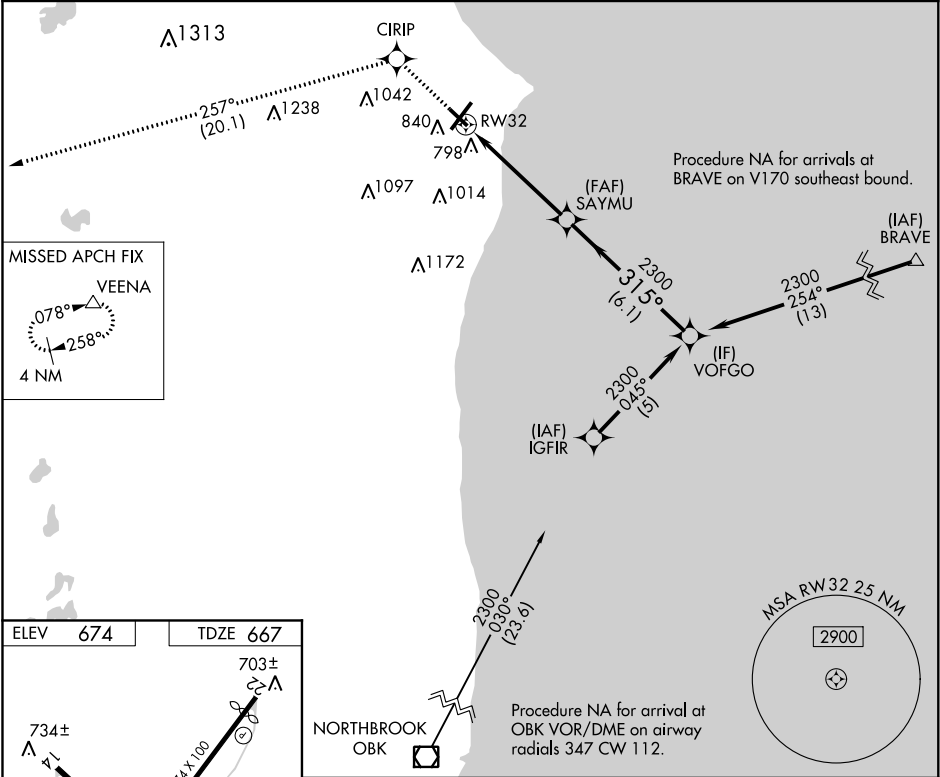
▼

▲

DME/DME RNP-0.3 NA. VDP NA when using General Mitchell Intl altimeter setting. When local altimeter setting not received, use General Mitchell Intl altimeter setting: Increase all MDA 40 feet and visibility Cat C and D ¼ SM. Rwy 32 helicopter visibility reduction below ¾ SM NA. Circling Rwy 14 NA at night.

MISSED APPROACH: Climb to 3000 direct CIRIP and track 257° to VEENA and hold.

ASOS	MILWAUKEE APP CON	CLNC DEL	UNICOM
121.425	135.875 317.725	120.15	123.075 (CTAF) 0



3000 ↑	CIRIP ✦	tr 257°	VEENA △				
				SAYMU	VOFGO		