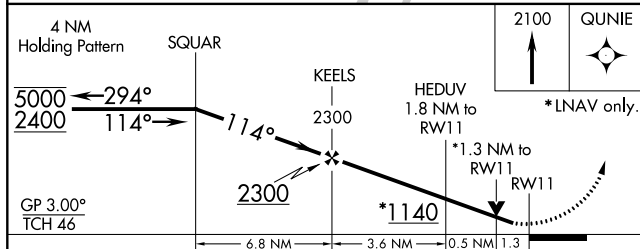
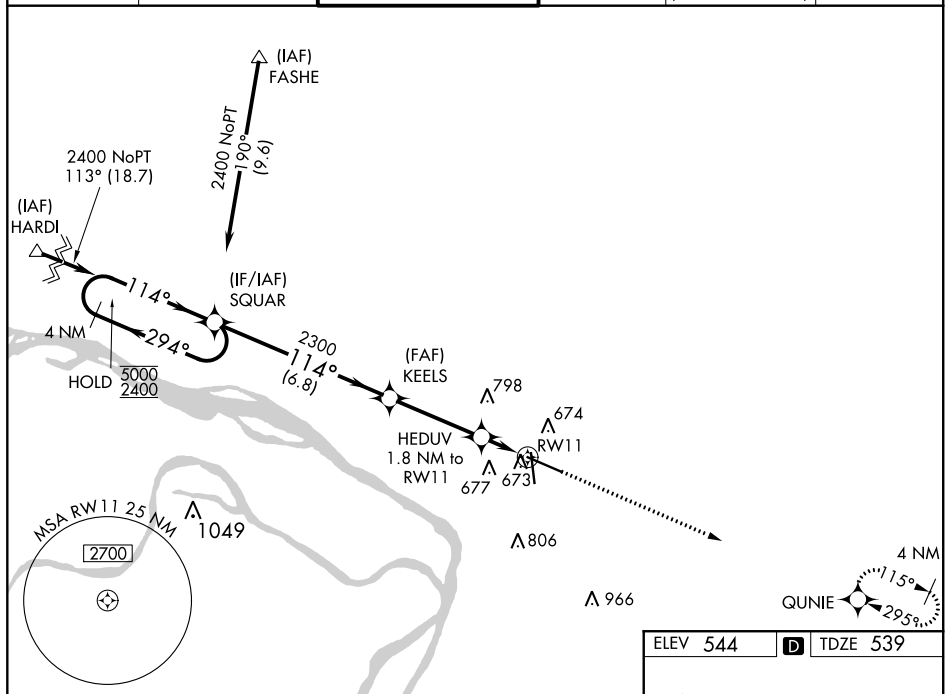


RNAV (GPS) RWY 11  
ST LOUIS RGNL (ALN)

**T** Rwy 11 helicopter visibility reduction below  $\frac{3}{4}$  SM NA.  
For uncompensated Baro-VNAV systems, LNAV/VNAV NA below -16°C or above 54°C.

**MISSED APPROACH:**  
Climb to 2100 direct  
QUNIE and hold.

ATIS <b>128.0</b>	ST LOUIS APP CON <b>124.2 353.9</b>	REGIONAL TOWER* <b>126.0 (CTAF) 0 239.0</b>	GND CON <b>120.2</b>	CLNC DEL <b>120.2</b> (when tower closed)	UNICOM <b>122.95</b>
----------------------	--	--	-------------------------	---	-------------------------



CATEGORY	A	B	C	D
LPV DA	794-7 $\frac{7}{8}$ 255 (300-7 $\frac{7}{8}$ )			
LNAV/VNAV DA	881-1 $\frac{1}{8}$ 342 (400-1 $\frac{1}{8}$ )			
LNAV MDA	980-1 441 (500-1)		980-1 $\frac{3}{8}$ 441 (500-1 $\frac{3}{8}$ )	
CIRCLING	1000-1 456 (500-1)		1000-1 $\frac{1}{2}$ 456 (500-1 $\frac{1}{2}$ )	1100-2 556 (600-2)

