

WAAS CH <b>63119</b> <b>W06A</b>	APP CRS <b>063°</b>	Rwy Idg TDZE Apt Elev	<b>5013</b> <b>394</b> <b>398</b>
----------------------------------------	------------------------	-----------------------------	-----------------------------------------

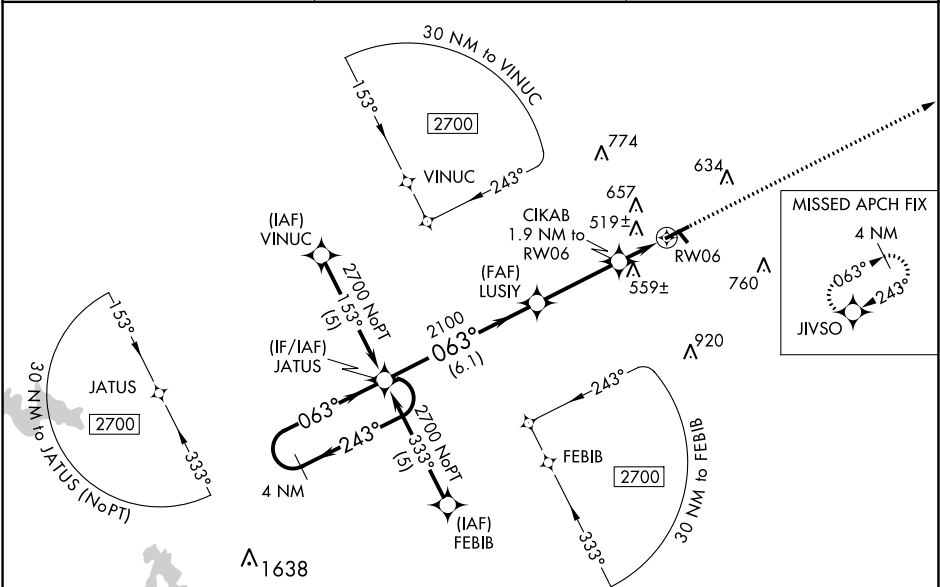
RNAV (GPS) RWY 6

HARRISBURG-RALEIGH (HSB)

**⚠** Baro-VNAV NA when using Williamson County Rgnl altimeter setting. For uncompensated Baro-VNAV systems, LNAV/VNAV NA below -15°C (5°F) or above 48°C (118°F). DME/DME RNP-0.3 NA. Visibility reduction by helicopters NA. When local altimeter setting not received, use Williamson County Rgnl altimeter setting and increase all DA 62 feet and all MDA 80 feet; increase LPV all Cats, LNAV/VNAV all Cats, LNAV Cats C and D and Circling Cats C and D visibility ¼ mile. VDP NA with Williamson County Rgnl altimeter setting.

MISSED APPROACH:  
Climb to 2000 direct JIVSO and hold.

AWOS-3 <b>135.925</b>	KANSAS CITY CENTER <b>127.475 346.275</b>	UNICOM <b>122.8 (CTAF) 0</b>
--------------------------	----------------------------------------------	---------------------------------



4 NM Holding Pattern JATUS		ELEV 398		TDZE 394	
2700 ← 243° GP 3.00° TCH 35°		JIVSO 2000		*LNAV only	
2100		LUSIY 2100		CIKAB 1.9 NM to RW06	
6.1 NM		3.3 NM		*1.3 NM to RW06	
CATEGORY		A		B	
LPV DA		682-1		288 (300-1)	
LNAV/VNAV DA		958-2		564 (600-2)	
LNAV MDA		820-1		426 (500-1)	
CIRCLING		880-1		1020-1	
		482 (500-1)		622 (700-1)	
		1020-1¾		426 (500-1¾)	
		1020-2		622 (700-2)	
		REIL Rwy 6 and 24 0		MIRL Rwy 6-24 and 14-32 0	