

WAAS CH <b>50428</b> <b>W21A</b>	APP CRS <b>205°</b>	Rwy Idg TDZE <b>764</b> Apt Elev <b>764</b>	<b>5792</b> <b>764</b> <b>764</b>
--	------------------------	---	---

RNAV (GPS) RWY 21

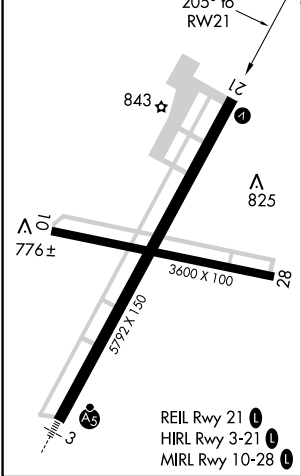
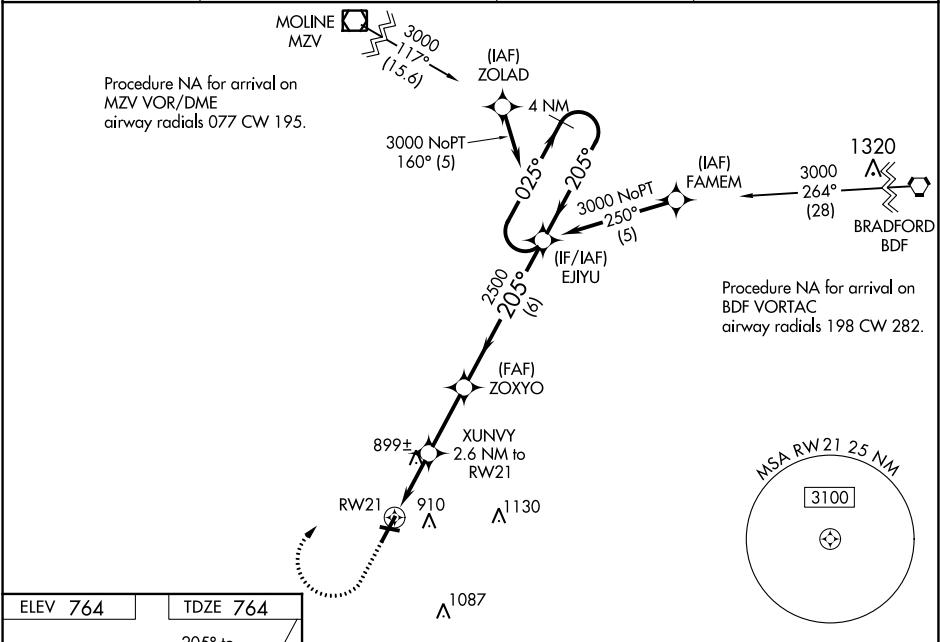
GALESBURG MUNI (GBG)

⚠

For uncompensated Baro-VNAV systems, LNAV/VNAV NA below -16°C (4°F) or above 39°C (102°F). Circling Rwy 10 NA at night. DME/DME RNP-0.3 NA. When local altimeter setting not received, use Macomb altimeter setting and increase all DA 71 feet and all MDA 80 feet, increase LPV visibility to ¾ SM all Cats, increase LNAV/VNAV visibility to 1¼ SM all Cats, increase LNAV Cats C/D visibility to 1¾ SM. VDP and Baro-VNAV NA when using Macomb altimeter setting.

MISSED APPROACH: Climb to 1700 then climbing right turn to 3000 direct EJIYU and hold.

AWOS-3 <b>118.975</b>	QUAD CITY APP CON ★ <b>133.275 257.8</b>	CLNC DEL <b>120.7</b>	UNICOM <b>123.0 (CTAF)</b>
--------------------------	---	--------------------------	-------------------------------



1700 ↑	3000 ↗	EJIYU ✧	4 NM Holding Pattern			
* LNAV only	XUNVY 2.6 NM to RW21	ZOXYO 2500	EJIYU	025° → ← 205° 3000		
				GP 3.00° TCH 55		
CATEGORY	A	B	C	D		
LPV DA	964-¾		200 (200-¾)			
LNAV/VNAV DA	1060-⅞		296 (300-⅞)			
LNAV MDA	1160-1 396 (400-1)		1160-1½ 396 (400-1½)			
CIRCLING	1220-1 456 (500-1)		1220-1½ 456 (500-1½)		1340-2 576 (600-2)	