

WAAS
CH **42517**
W30A

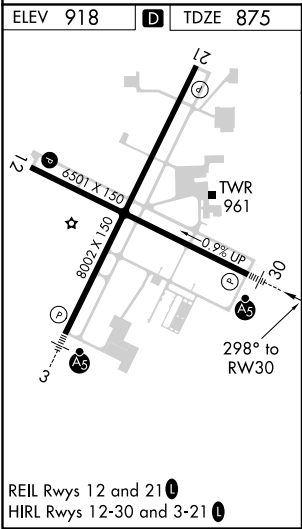
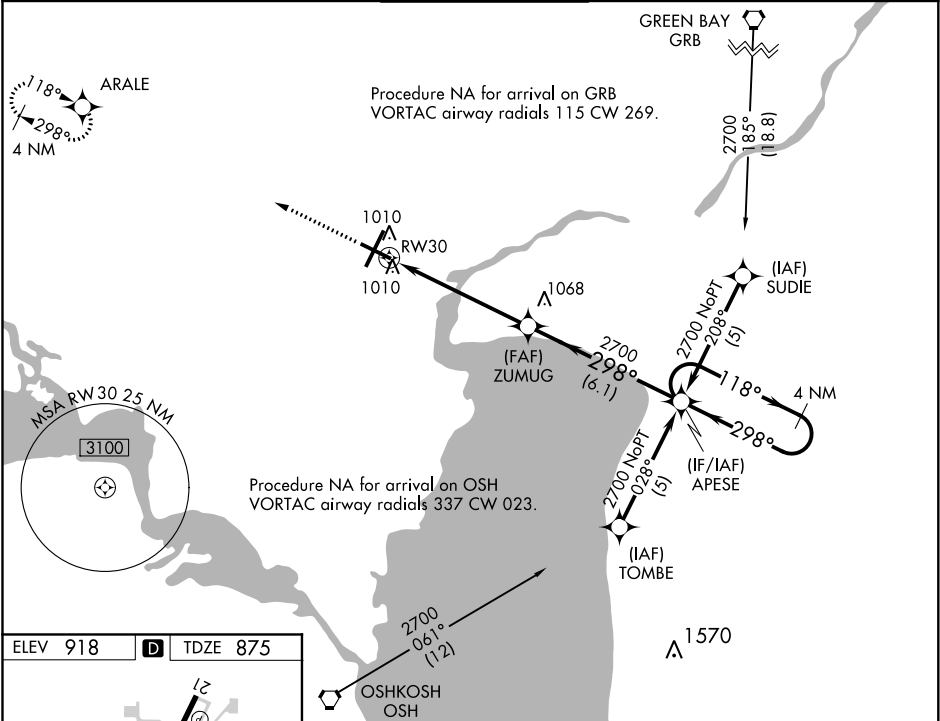
APP CRS
298°

Rwy Idg
TDZE
Apt Elev
6501
875
918

RNAV (GPS) RWY 30

APPLETON INTL (ATW)

RNP APCH.				<div>MALSRR</div> <div><div><div><div></div></div><div><div></div></div></div><div><div></div></div></div>	MISSED APPROACH: Climb to 2600 direct ARALE and hold.
▼ For uncompensated Baro-VNAV systems, LNAV/VNAV NA below -16°C (4°F) or above 54°C (130°F).					
ATIS 127.15	GREEN BAY APP CON★ 126.3 338.2	APPLETON TOWER★ 119.6(CTAF) 0	GND CON 121.7	UNICOM 122.95	



2600 ARALE		VGSI and RNAV glidepath not coincident (VGSI Angle 3.00/TCH 61).		4 NM Holding Pattern
*LNAV only.		ZUMUG APESE		
*1.3 NM to RW30		2700 298° 118° 2700 298°		
RW30		GP 3.00° TCH 50		
1.3 4.2 NM 6.1 NM				
CATEGORY	A	B	C	D
LPV DA	1075-1/2 200 (200-1/2)			
LNAV/VNAV DA	1310-1 435 (400-1)			
LNAV MDA	1320-1/2	445 (500-1/2)	1320-7/8 445 (500-7/8)	1320-1 445 (500-1)
CIRCLING	1340-1 422 (500-1)	1380-1 462 (500-1)	1400-1 1/2 482 (500-1 1/2)	1480-2 562 (600-2)