

LOC/DME I-FLD <b>108.3</b> Chan <b>20</b>	APP CRS <b>002°</b>	Rwy Idg <b>5941</b> TDZE <b>795</b> Apt Elev <b>808</b>
---	------------------------	---

LOC RWY 36  
FOND DU LAC COUNTY (FLD)

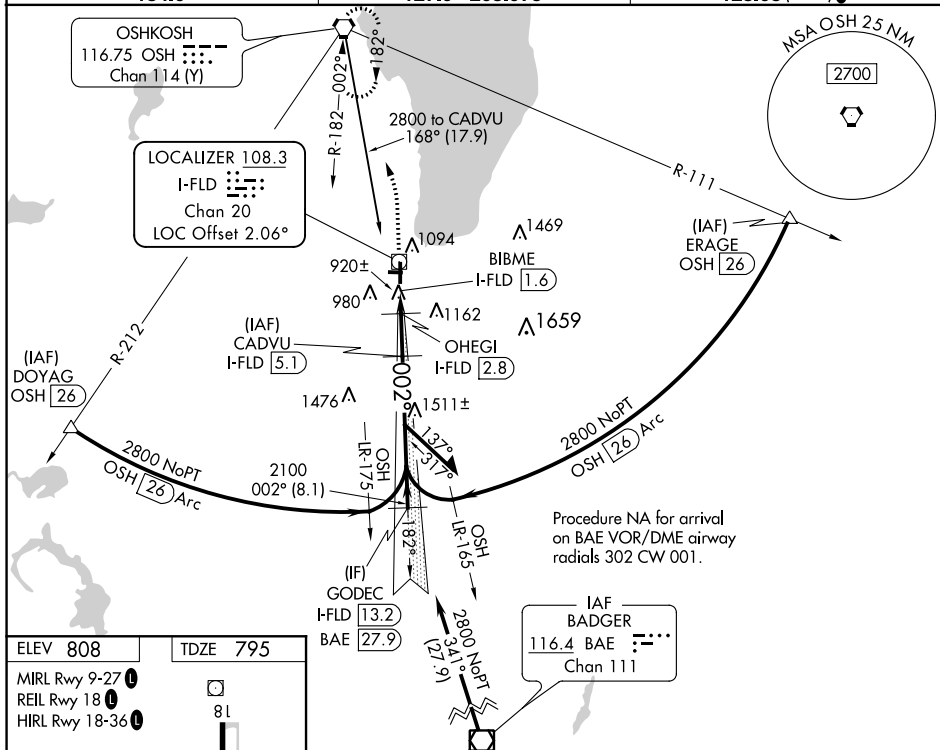
DME required. Radar required for Procedure Entry at ERAGE.

**⚠** **⚠** **NA** Circling Rwy 9, 27 NA at night. For inop ALS, increase S-LOC 36 Cat A/B visibility to 1 SM, and Cat C/D to 1½ SM. When local altimeter setting not received, use Oshkosh altimeter setting. increase all MDA 40 feet and increase Circling Cat C/D visibility ¼ SM. VDP NA when using Oshkosh altimeter setting. For inop ALS when using Oshkosh altimeter setting, increase S-LOC 36 Cat A/B visibility to 1 SM.

MALSR  
A5

**MISSED APPROACH**  
Climb to 2000 then  
climbing left turn to  
3000 direct OSH  
VORTAC and hold.

ASOS	MILWAUKEE APP CON	UNICOM
134.0	127.0 263.075	123.05 (CTAF) 1



**Use I-FLD DME when on the localizer course.**

CATEGORY	A	B	C	D
S-LOC 36	1180- $\frac{3}{4}$	385 (400- $\frac{3}{4}$ )		
<b>C</b> CIRCLING	1400-1	592 (600-1)	1520-2 712 (800-2)	1520-2 $\frac{1}{4}$ 712 (800-2 $\frac{1}{4}$ )