

WAAS CH <b>93800</b> <b>W36A</b>	APP CRS <b>004°</b>	Rwy Idg TDZE <b>795</b> Apt Elev <b>808</b>
--	------------------------	---

RNAV (GPS) RWY 36

FOND DU LAC COUNTY (F.L.D)

RNP APCH.

▼

▲

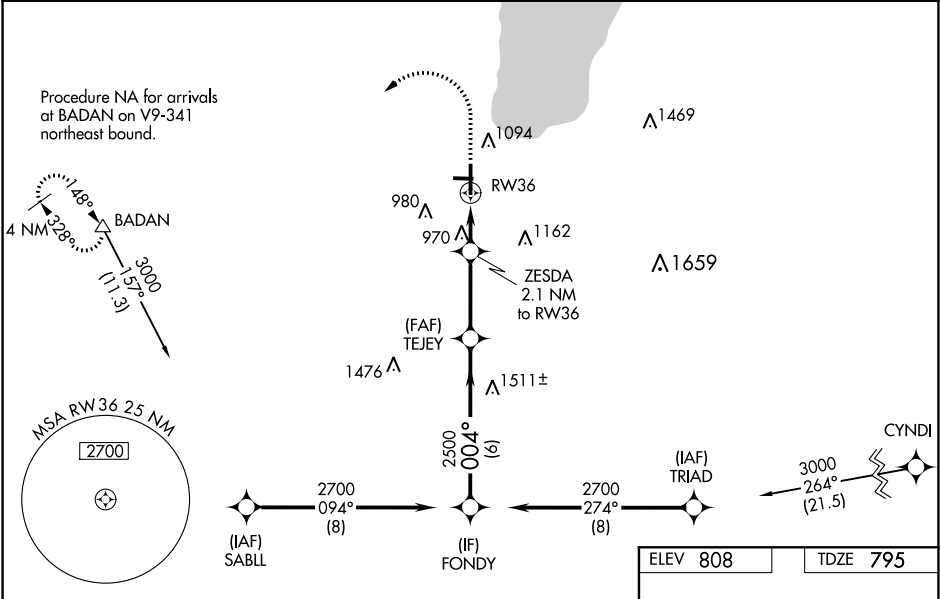
Circling Rwy 9, 27 NA at night. Baro-VNAV and VDP NA when using Oshkosh altimeter setting. For uncompensated Baro-VNAV systems, LNAV/VNAV NA below -21°C or above 54°C. When local altimeter setting not received, use Oshkosh altimeter setting: increase LPV DA to 1202 feet and LNAV/VNAV DA to 1260 feet; increase all MDAs 40 feet and visibility Circling Cat C/D ¼ SM. For inop ALS, increase LNAV/VNAV all Cats visibility to 1¼ SM and LNAV Cat A/B visibility to 1 SM, and Cat C/D visibility to 1½ SM. For inop ALS when using Oshkosh altimeter setting, increase LPV all Cats visibility to 1½ SM and LNAV/VNAV visibility all Cats to 1½ SM and LNAV Cat A/B visibility to 1 SM.

MALSR

MISSED APPROACH:

Climb to 1400 then climbing left turn to 3000 direct BADAN and hold.

ASOS <b>134.0</b>	MILWAUKEE APP CON <b>127.0 263.075</b>	UNICOM <b>123.05 (CTAF)</b>
----------------------	---	--------------------------------



VGSI and RNAV glidepath not coincident (VGSI Angle 3.00/TCH 35).		1400	3000	BADAN
FONDY		TEJEY	ZESDA	
2700		2500	2.1 NM to RW36	
004°			* 1.4 NM to RW36	
2500			* 1500	
GP 3.00° TCH 45				
6 NM		3.1 NM	0.7 NM	1.4 NM
CATEGORY	A	B	C	D
LPV DA	1171-¾		376 (400-¾)	
LNAV/VNAV DA	1229-1		434 (500-1)	
LNAV MDA	1280-¾ 485 (500-¾)		1280-1 485 (500-1)	
CIRCLING	1400-1 592 (600-1)		1520-2 712 (800-2)	
			1520-2¼ 712 (800-2¼)	

ELEV 808

TDZE 795

81

27

36

004° to RW36

MIRL Rwy 9-27

REIL Rwy 18

HIRL Rwy 18-36