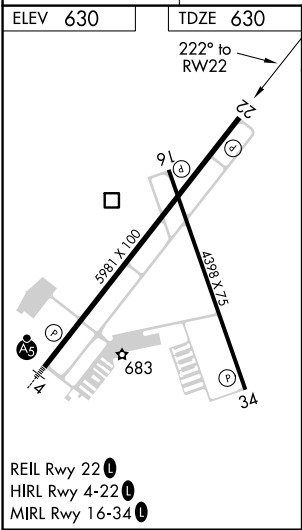
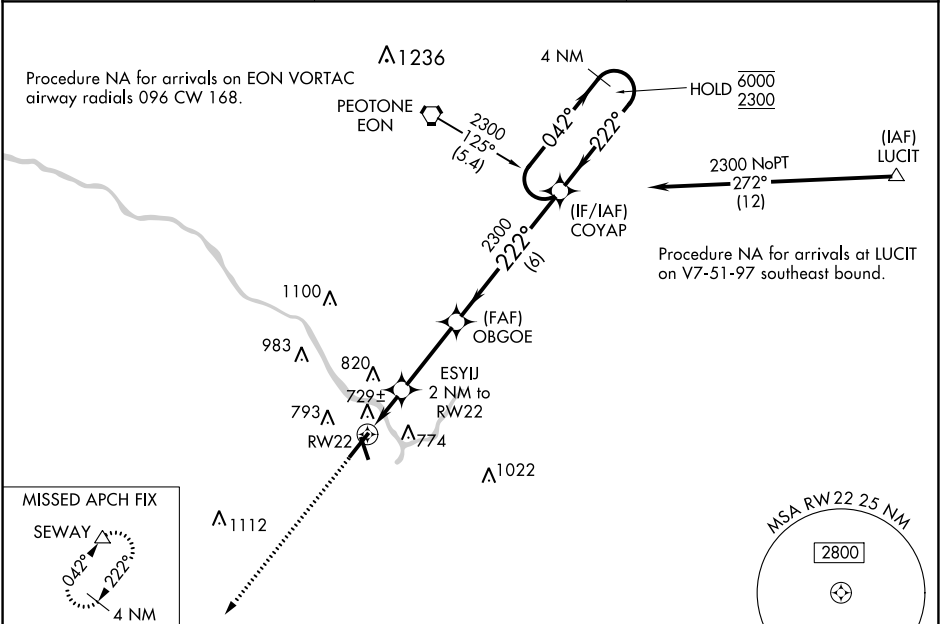


WAAS CH 72730 W22A	APP CRS 222°	Rwy Idg TDZE 630 Apt Elev 630
--	------------------------	---

RNAV (GPS) RWY 22
GREATER KANKAKEE (IKK)

RNP APCH. ⚠ Circling Rwy 16, 34 NA at night. Rwy 22 helicopter visibility reduction below ¾ SM NA. ⚠ For uncompensated Baro-VNAV systems, LNAV/VNAV NA below -16°C or above 54°C.	MISSED APPROACH: Climb to 2300 direct SEWAY and hold.
---	--

AWOS-3 128.475	CHICAGO CENTER 132.5 284.7	UNICOM 123.0 (CTAF) 0
--------------------------	--------------------------------------	---------------------------------



ELEV 630	TDZE 630
2300 SEWAY	4 NM Holding Pattern
*LNAV only	ESYUJ 2 NM to RW22
*1 NM to RW22	OBGOE 2300
RW22	COYAP
1300*	222° 042° 6000 2300
1 NM 1 NM 3.1 NM 6 NM	GP 3.00° TCH 37
CATEGORY	A B C D
LPV DA	880-7/8 250 (300-7/8)
LNAV/VNAV DA	910-1 280 (300-1)
LNAV MDA	980-1 350 (400-1)
CIRCLING	1080-1 450 (500-1) 1100-1 470 (500-1) 1140-1½ 510 (600-1½) 1340-2¼ 710 (800-2¼)

EC-3, 31 DEC 2020 to 28 JAN 2021

EC-3, 31 DEC 2020 to 28 JAN 2021