

WAAS CH <b>86731</b> <b>W34A</b>	APP CRS <b>345°</b>	Rwy Idg TDZE <b>620</b> Apt Elev <b>630</b>
--	------------------------	---

RNAV (GPS) RWY 34

GREATER KANKAKEE (IKK)

RNP APCH.

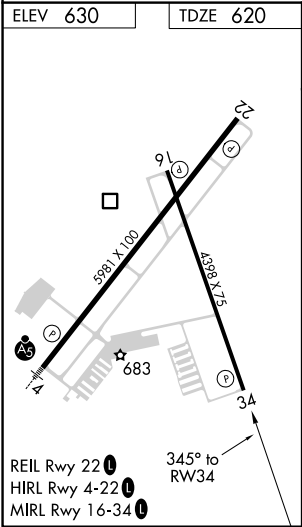
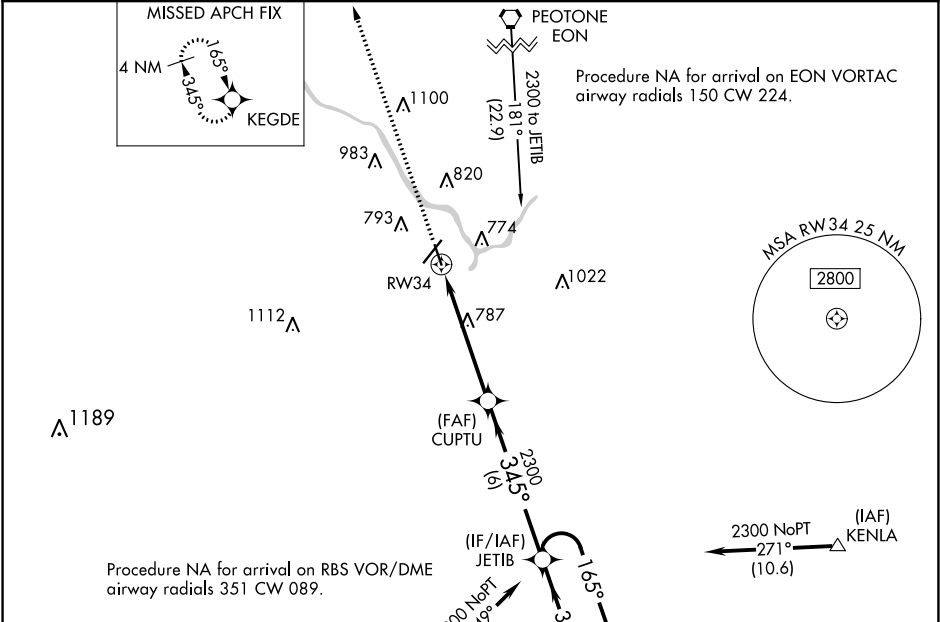
▼

⚠

Rwy 34 helicopter visibility reduction below 1 SM NA. For uncompensated Baro-VNAV systems, LNAV/VNAV NA below -16° C or above 54° C. Straight-in and Circling Rwy 34 NA at night, Circling Rwy 16 NA at night.

MISSED APPROACH: Climb to 2300 direct KEGDE and hold.

AWOS-3 <b>128.475</b>	CHICAGO CENTER <b>132.5 284.7</b>	UNICOM <b>123.0 (CTAF) 0</b>
--------------------------	--------------------------------------	---------------------------------



2300	KEGDE	CUPTU	JETIB	4 NM Holding Pattern
2300	2300	2300	2300	2300
5.2 NM	6 NM			
CATEGORY	A	B	C	D
LPV DA	870-1	250 (300-1)		
LNAV/VNAV DA	885-1	265 (300-1)		
LNAV MDA	1040-1	420 (500-1)	1040-1½	420 (500-1½)
CIRCLING	1080-1	1100-1	1140-1½	1340-2½
	450 (500-1)	470 (500-1)	510 (600-1½)	710 (800-2½)